

BE
FUTURE
MADE

MALAYSIA UNDERGRADUATE PROSPECTUS 2024



REPUTATION AND RANKINGS

Heriot-Watt is valued for conducting ground-breaking research, which is relevant to business and industry. We aim to find radical innovations and solutions to real-world challenges for the benefit of society.

STUDYING WITH US

We have excellent facilities, highly-rated teaching and world-leading research activity, which together provide an exceptional learning and teaching experience. As part of a bright, committed and imaginative community of undergraduates you will have the opportunity to realise your potential by gaining the knowledge and skills you need to achieve your career aspirations.

WORLD-LEADING RESEARCH

We will bring you into contact with leading researchers who are working on some of the most important areas for twenty-first-century society. Over 80% of academic staff are currently engaged in research at internationally recognised levels.

RANKED TOP 10 IN THE UK

THE TIMES AND THE SUNDAY TIMES GOOD UNIVERSITY GUIDE 2023:

BUILDING, GENERAL ENGINEERING,
AERONAUTICAL AND MANUFACTURING
ENGINEERING, CHEMICAL ENGINEERING, TOWN
AND COUNTRY PLANNING, MATHEMATICS.

GUARDIAN UNIVERSITY GUIDE 2023:
COMPUTER SCIENCE AND INFORMATION
SYSTEMS, CONSTRUCTION, SURVEYING
AND PLANNING, ECONOMICS.

TOP 250 UNIVERSITIES GLOBALLY

WE ARE RANKED 235TH IN THE
WORLD AND 32ND IN THE UK
(QS WORLD UNIVERSITY
RANKINGS 2024)



ALUMNI BUSINESS LEADERSHIP

RANKED 1ST IN THE UK
FOR PRODUCING CEOS,
MDS AND ENTREPRENEURS
(NOVUNA BUSINESS
CASH FLOW STUDY 2023)

TOP 200
WORLDWIDE FOR
CHEMICAL ENGINEERING,
CIVIL ENGINEERING, AND
PETROLEUM ENGINEERING
INCLUDING BEING RANKED
12TH IN THE WORLD AND
3RD IN THE UK FOR
PETROLEUM ENGINEERING
(QS SUBJECT RANKINGS 2023)

WORLD-LEADING
HERIOT-WATT PRODUCES
MORE CHIEF EXECUTIVES
THAN ANY OTHER
UNIVERSITY IN SCOTLAND
AND RANKED 24TH OUT
OF 121 UNIVERSITIES ON
THE UK-WIDE LIST
(STUDY CONDUCTED BY HITACHI
CAPITAL INVOICE FINANCE 2021)

TOP 4 IN THE UK
WE ARE TOP IN SCOTLAND
AND 4TH IN THE UK FOR
GRADUATE EMPLOYABILITY
(HIGHER EDUCATION STATISTICS
AGENCY [HESA] GRADUATE
OUTCOME SURVEY)

CONTENTS

Reputation and Rankings	2
Become a Future Made Leader - Professor Richard A. Williams	4
Become a Future Made Leader - Professor Mushtak Al-Atabi	5
What's Different	6
Go Global	8

BE FUTURE MADE

Why Malaysia	11
Made in Heriot-Watt Malaysia	12
The UK's New National Robotarium	14
Be Future Made in Business	16
A Global University	18
Your Future Made Career and Employability	22
Foundation Programmes	24
How it Works	26
Foundation Pathways: Foundation in Business	28
Foundation Pathways: Foundation in Science	30
Developing Resilient Graduates	30

STUDY

Actuarial Science	35
Computing Science	38
Statistical Data Science	40
Quantity Surveying	42
Accounting and Business Finance	44
Business and Finance	46
International Business Management	48
Bachelor of Business Administration	50
Marketing Programme	51
Chemical Engineering	52
Civil Engineering	55
Electrical and Electronic Engineering	56
Mechanical Engineering	58
Psychology	61
Psychology with Management	62
Study at Heriot-Watt	63

JOIN US

Entry Requirements	66
Scholarships and tuition fees	70
Sponsorships	72
Your Future Made Global Network	73
How to Apply	74
Student Clubs and Societies	76
Supporting You	78
Frequently Asked Questions	82
Our Impact	84
Maps and campus addresses	86

BECOME A FUTURE MADE LEADER

**JOIN US TO PUSH THE FRONTIERS OF SCIENCE,
TECHNOLOGY, ENGINEERING, BUSINESS AND DESIGN.**

For more than 200 years our education and innovative research has had a profound social impact on a world stage. A pioneer in bringing education to working people, Heriot-Watt was founded as the world's first Mechanics Institute. Our founding ethos continues to underpin the industry-informed education that gives our undergraduate students the drive to hit the ground running and be Future Made in their career of choice.

University is a life-changing experience and Heriot-Watt is a vibrant academic and employer-connected community. You will find us a place that has a mission to support all our students to truly flourish, both academically and to gain a clear sense of personal purpose for the future. Across all our campuses our focus ahead is to continue to play a leading role in the global economic recovery and to lead out in addressing the climate challenge of being globally free of the effects of fossil fuels within a generation.

In particular, we are stepping up our industry collaborations and partnerships; focusing our research strengths and 'in-demand' skills in subjects ranging from Data Science, Healthcare Technologies, Cyber Security and Renewable Energy to Artificial Intelligence, Robotics, Logistics, Business Management, Quantum Technology and Marketing.

Our aim is to connect you to people and career opportunities across the world through our international campus locations and our 159,000 alumni in 190 countries.



PROFESSOR RICHARD A. WILLIAMS
OBE, FEng, FRSE, FTSE
Principal and Vice-Chancellor

Welcome to Heriot-Watt University Malaysia and congratulations on taking this significant step for pursuing your education. The decision to choose a university and programme marks a vital moment in your life, one that will be part of your personal and professional transformation.

While we are a globally connected university, we are committed to providing you with a special experience here in Malaysia. Our excellent academics, great facilities, global employability and industry partners in various industries are dedicated to help you succeed as a student and as a graduate.

Ranked among the UK's leading universities, we take pride in offering a variety of world-class programmes, while providing our students with the opportunity of a seamless inter-campus transfer under our Go Global programme granting you the unique chance to study at our Edinburgh and/or Dubai campuses.

Here at Heriot-Watt University Malaysia, we empower our students to be successful in an environment engineered to facilitate holistic growth from the Foundation level right up through to the Undergraduate degree. You will not only have access to excellent educational programmes but also discover your purpose and mobilise it into a positive impact in the world.

I am confident that Heriot-Watt University Malaysia is the right choice for you, and I look forward to welcoming you to our community soon.



PROFESSOR MUSHTAK AL-ATABI
Provost and Chief Executive Officer
Heriot-Watt University Malaysia

WHAT'S DIFFERENT

Belong to a diverse, inclusive and international community working together across boundaries and cultures. As a pioneer in education and innovative research for 200 years, a Heriot-Watt education is informed by the needs of international business and industry. Our research has had a profound impact on the global challenges faced by society.

In joining us you will become an integral part of that community where we inspire curiosity to learn and find solutions that transform lives. You will join scholars who are leaders in ideas and solutions, delivering innovation, educational excellence and ground-breaking research.



5 GLOBAL CAMPUSES

A truly international University with five global campuses, partners in over 100 countries and around 27,000 students studying worldwide.

OUR IMPACT

A world-leading University with strong links to international business and industry, attracting leaders in ideas and solutions tackling real-world challenges.

OUR FACILITIES

We have excellent facilities, highly rated teaching and world-leading research activity, which together provide an exceptional learning and teaching experience.

94% GRADUATE LEVEL JOBS

94% of Heriot-Watt students are in employment or further study within 15 months after graduation and are actively sought by global industry.

RESEARCH WITH IMPACT

Our research makes a real difference to people and the world we live in. From tackling climate change, to pushing the boundaries in artificial intelligence and the future of global business logistics, we are leading the way.

LEARNING THROUGH DOING

Our students get real exposure to the industries they want to work in – through hands-on practical learning in our labs, projects, internships and industry case studies – that's why we are No.1 in Scotland for graduate employability.

A TRULY GLOBAL PERSPECTIVE

Some universities claim to be global, but at Heriot-Watt we have both an international reputation and global campuses that provide opportunities like no other. Our perspective on the world and your future career path is truly global and can take you further than you could imagine.

A SPECIALIST IN THE SUBJECTS THAT MATTER

From science and engineering, to all paths of business, mathematics, computer science and design, we strive for academic excellence and real-world relevance in all our subject areas. We offer degree programmes that are valuable to you, potential future employers and society.

ONE HERIOT-WATT

By choosing Heriot-Watt you will join a community of over 27,000 students and an alumni network of over 159,000, who stand shoulder to shoulder with our faculty of leaders in ideas and solutions.



GO GLOBAL



The Go Global programme at Heriot-Watt was the main attraction for me. To be able to study in a foreign country and experience new surroundings was an opportunity that I couldn't pass up. The Go Global programme has allowed me to make so many friends in a country far from home and create wonderful memories that I will never forget.

AISYAH FARAH BINTI AZRA
BSc (Hons) Actuarial Science



Among graduates who were mobile during their degree, those in work were more likely to be in a graduate level job (76.4% compared to 69.9%) and earn 5% more than their non-mobile peers.

UK HE INTERNATIONAL UNIT'S 2017 REPORT 'GONE INTERNATIONAL'



of Go Global students would recommend participation in an Inter-Campus Transfer.

BECOME A GLOBAL STUDENT

Heriot-Watt encourages students to gain international experience as part of their studies. We have campuses in the UK and Dubai as well as in Malaysia and you can take advantage of these campuses by taking a Go Global transfer to Edinburgh or Dubai for a semester, a year or longer. It's also possible to transfer to more than one location over the course of your programme.

WHY GO GLOBAL?

- Broaden your horizons
- Experience new cultures
- Build your global network
- Enhance your career prospects
- Build confidence

Studying abroad is a great opportunity to meet people, discover new interests and develop your life skills. It can build your confidence, develop your adaptability and hone your resourcefulness, which are all important

personal attributes valued by employers.

In today's world of globally connected business, the network, knowledge and experience you build up while studying abroad in Europe or the Middle East can give you a competitive edge, as well as add a new perspective to your life, aspirations and career options.

For more information on Inter-Campus Transfers, visit www.hw.ac.uk/goglobal

*Heriot-Watt reserves the right to withdraw opportunities to participate in the Go Global programme, including Inter-Campus Transfer or Exchange.

PETER RATTRAY'S STORY

IN MECHANICAL ENGINEERING



PETER RATTRAY
MEng Mechanical Engineering

Heriot-Watt University has had two substantial impacts on my career.

Firstly, the option to seamlessly transfer between the UK and Malaysia campuses at any point during my engineering degree has allowed me to develop my soft skills by working with students on the other side of the world. I was able to do my first year at the Edinburgh campus before doing the rest of my degree at the Malaysia campus in Putrajaya.

The second, was the opportunity to participate in the University-funded team, Engineers without Borders, in Malaysia. It has allowed me to apply my knowledge outside of the classroom by working hands-on with hydro and solar power projects across Malaysia.

When I was attending interviews, I showed employers that I had a portfolio of both the hard and soft engineering skills that I wouldn't have been able to develop if it wasn't for Heriot-Watt University Malaysia.

www.hw.ac.uk/malaysia



KUALA LUMPUR

is ranked as Asia's most affordable study destination.

QS BEST STUDENT CITIES RANKING 2023

MALAYSIA

is ranked 5th safest in Asia-Pacific.

2020 GLOBAL PEACE INDEX

4,600KM

Home to some of the world's most idyllic beaches and islands, Malaysia has over 4,600km of coastline with over 90 islands to choose from.

MULTI-RACIAL MULTI-ETHNIC

Dubbed "mini Asia", Malaysia is a multi-racial and multi-ethnic country where the majority are Malays, Chinese and Indian.

WHY MALAYSIA

Making the most of both learning and leisure time is second nature to the aspiring Heriot-Watt University student studying at our Malaysia campus.



MADE IN HERIOT-WATT MALAYSIA





The campus is a state-of-the-art teaching and learning environment, reflecting our status as a leading provider of high-quality, professionally orientated education, knowledge transfer and research.

Whether you are a Malaysian or are travelling from abroad our purpose-built campus in Putrajaya has something to offer for every aspiring student.

A FANTASTIC CENTRAL LOCATION

Heriot-Watt University Malaysia's campus is based in the modern garden-city of Putrajaya just 25km south of Malaysia's capital Kuala Lumpur. Putrajaya is a growing, dynamic city and its proximity allows easy access to the extensive cultural, leisure and retail amenities of the buzzing metropolis.

RANKED 12TH IN UNESCO'S TOP 20 COUNTRIES FOR STUDENT DESTINATIONS

MALAYSIA'S FIRST GREEN CAMPUS

Heriot-Watt University Malaysia's purpose-built £35m campus sits on 4.8 acres in a stunning lakeside location providing exceptional educational facilities in an excellent environment, close to the Putrajaya marina and its modern leisure and sports facilities. This is a fantastic green area, part of Putrajaya Lake's 'green continuum', of which building design is a conscious reference.

A GREEN ROOF TO MATCH

The 'green campus' is remarkable for having the first living grass roof of its kind in Malaysia. At 300 metres long and 30 metres wide, it is the most recognisably sustainable feature of the campus. The roof shades the naturally ventilated spaces below, reduces thermal transmittance, and acts as an observation deck, accessible by glass lift.

“Heriot-Watt courses are all industry-relevant. My lecturers are highly qualified and passionate about their subjects. My experience here has opened my mind to other careers in business I had not considered before.”

ZULAIKHA BINTI ZAINUL RIZAM
BSc (Hons) Psychology with Management

www.hw.ac.uk/malaysia

THE UK'S NEW

NATIONAL ROBOTARIUM

“This is an important time in the evolution and application of this most disruptive and ground-breaking of technologies.”

STEWART MILLER

Chief Executive Officer
National Robotarium

Heriot-Watt is home to the UK's new National Robotarium, delivering leading-edge research and support for business creation and growth, as well as data skills, new undergraduate and postgraduate programmes, and continuous professional development. The National Robotarium is a joint partnership with the University of Edinburgh and is the UK's leading innovation hub for the practical application of robotics and autonomous systems to drive economic growth and transform people's lives worldwide.

www.thenationalrobotarium.com



**UK'S LEADING INNOVATION
HUB IN ROBOTICS AND
AUTONOMOUS SYSTEMS**



“When joining our School and Heriot-Watt University, you join a network of industry professionals, top academics and people driven to succeed. We are here to prepare you to enter competitive job markets, excel professionally or even start a new business.”

PROFESSOR ANGUS LAING

Executive Dean, Edinburgh Business School





BE FUTURE MADE IN

BUSINESST

**Join Scotland's largest
Business School: we support
over 14,000 students based in
more than 150 countries.**

Our mission is to create tomorrow's leaders for tomorrow's markets and we specialise in industry-focused business degree programmes which embrace a truly international outlook.

Studying with us will kick-start your business career: we've an established reputation for producing high-calibre, career-ready graduates. Our alumni include FTSE100 CEOs, a Prime Minister, and entrepreneurs behind many successful start-up businesses, to name just a few.

Our work with industry ensures your learning will prepare you for the real world. You'll be taught by experienced professionals, and globally-recognised academics, delivering course content that is cutting-edge and up-to-date.

Many of our programmes are delivered across Heriot-Watt's campuses in Edinburgh, Dubai and Malaysia, offering you an exciting opportunity to transfer between our worldwide locations for one semester or more.

The University's student community is highly international, made up from 158 different countries, so you will have many opportunities to meet and learn with people from all over the world. Coupled with our high quality degree programmes, this dynamic, inter-cultural experience will open your mind and expand your learning to ensure your career is Future Made.



**EDINBURGH
BUSINESS
SCHOOL**

A GLOBAL UNIVERSITY

EDINBURGH

A FESTIVAL CITY WITH AN INTERNATIONAL OUTLOOK





EDINBURGH IS RANKED 15TH IN THE WORLD & 2ND IN THE UK BY QS BEST STUDENT CITIES

“The green and peaceful campus is situated in one of the most beautiful cities in the world. It’s only 30 minutes to the city centre, where there is so much to do and discover, as well as great student nightlife. It really does offer the best of both worlds.”

VIVIAN HOE

MA (Hons) Accountancy and Finance
Audit Associate, ZHONGHUI ANDA CPA Limited,
Hong Kong

Our global campuses are situated in some of the world’s most inspiring locations. Each offers superb facilities, safe surroundings and an international welcome. We offer a unique learning environment close to the exciting and vibrant cities of Edinburgh, Dubai and Kuala Lumpur.

www.hw.ac.uk/virtualtours



www.hw.ac.uk/edinburgh

EDINBURGH

A FESTIVAL CAPITAL WITH AN
INTERNATIONAL PERSPECTIVE

CAMPUSES AROUND THE WORLD



www.hw.ac.uk/borders

GALASHIELS

A WORLD LEADING CENTRE
FOR CREATIVITY AND DESIGN

ORKNEY

A 'LIVING LABORATORY'
SUPPORTING THE GLOBAL
MARINE INDUSTRY



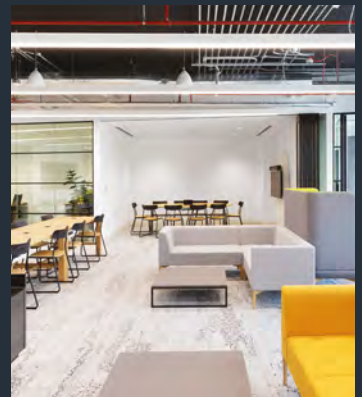
www.hw.ac.uk/orkney



www.hw.ac.uk/dubai

DUBAI

DUBAI IS IN UNESCO'S
TOP 20 DESTINATIONS
FOR GLOBAL STUDENTS



YOUR FUTURE MADE CAREER AND EMPLOYABILITY

“As a significant leader in employability, Heriot-Watt produces high-calibre students who are fully equipped for future success. A number of these graduates are currently developing successful careers at Cisco, contributing valuable knowledge and expertise while helping to grow our reputation as a worldwide leader in IT, networking and cyber security solutions. Our partnership with Heriot-Watt continues to go from strength to strength and we will continue to recruit from Heriot-Watt’s elite pool of talented graduates.”

TOM KNEEN
CTO Office, Cisco UKI



“My degree programme has established strong fundamentals not only in my chosen discipline but also in soft skills that are important for future growth.”

LELLA PRAVEEN

MA (Hons) International Business Management



CAREER-FOCUSED DEGREES

Our degrees are career-focused and relevant to the needs of business and industry. Employers actively seek out our graduates as our degrees are highly regarded for their relevance to the world of work. Many of our degrees are accredited by professional bodies.

OVER 150 EMPLOYERS ENGAGE WITH STUDENTS

We have excellent links with business and industry, both in the UK and internationally. Last year saw around 150 employers engage with our students on-campus and on-line through workshops, fairs and insight events. We help you meet some of the world's top employers, who know the strengths our graduates bring to the workplace. We will be offering a range of on-campus and on-line events during the coming year.

OVER 290 WORKSHOPS ANNUALLY

Our Careers and Graduate Futures Service offers individual advice and group workshops on CVs, application forms, assessment centres, selection tests and interviews.

Employers see us as a key part of their talent pipeline. That's why they advertised over 2,000 graduate jobs and internships with us in 2021-22.

Our students also have access to thousands more vacancies via our GRADfutures careers platform.

94% OF HERIOT-WATT STUDENTS ARE IN EMPLOYMENT OR FURTHER STUDY WITHIN 15 MONTHS OF GRADUATION.

GRADUATE OUTCOMES SURVEY 2019



FOUNDATION PROGRAMME: HOW IT WORKS

Foundation Programme

Intakes: January, April, July or September

Duration: Full-time, 3 semesters

Fees: See website for details:
hw.edu.my/fees

Programme: Foundation in Science
KPT/JPS (R2/0011/3/0223)
(MQA/FA3952) 07/23
Foundation in Business
KPT/JPS (R/010/3/0240)
(FA4351) 03/24

OVERVIEW

The Foundation Programme is a full-time three-semester programme of study.

The Foundation Programme comprises a combination of courses intended to prepare students who have completed appropriate national qualifications e.g. SPM, IGCSE or the equivalent level of studies.

It is a programme of academic subjects, study skills and English language training designed to provide students with a direct pathway to their chosen degree at the University.

LEARNING APPROACH

The Foundation Programme uses an innovative challenge-based learning approach to provide students with an enhanced and engaging learning experience. This approach enables students to develop independent learning skills that will ensure their success in their academic journey at University.

In Foundation in Business, you will be required to undertake English and Economics as the two mandatory courses and depending on your intended degree pathway, you will choose two further courses from the list below:

- Accounting
- Business Management
- Computing
- Mathematics
- Psychology

In Foundation in Science, you will be required to undertake English, Mathematics and Physics as the three mandatory courses and depending on your intended degree pathway, you will choose one further course from the below:

- Computing
- Chemistry
- Psychology

ASSESSMENT

You will be assessed regularly throughout the programme to ensure your learning is on track to meet the requirements for progressing to your chosen degree programme. Your attainment is monitored through a combination of continuous assessments and a final written examination.

ADMISSIONS NOTE

Please note that progression to your chosen Undergraduate programme may require specific grade achievement in your Foundation results and pre-requisite subjects with specific grades at the SPM/GCSE/equivalent levels.

www.hw.ac.uk/malaysia



FOUNDATION PATHWAYS: FOUNDATION IN BUSINESS

DEGREE PATHWAYS

There are 5 broad degree pathways that articulate to a wide range of degree programmes at Heriot-Watt University globally: Accounting and Finance, Business, Built Environment (excluding Civil Engineering), Psychology, Actuarial, Computing Science and Data Science.

FOR ACCOUNTING AND FINANCE PATHWAY

Entry requirement:	5Cs in SPM/IGCSE or equivalent, in relevant subjects including English and Mathematics
Recommended course combination:	English, Economics, Accounting and Business Management

FOR BUSINESS PATHWAY

Entry requirement:	5Cs in SPM/IGCSE or equivalent, in relevant subjects including English and a pass in Mathematics
Recommended course combination:	English, Economics, Business Management and one further course (Accounting* or Psychology) <i>*A credit in SPM/IGCSE or equivalent in Mathematics is required for Accounting option. Please note that a pass in SPM/IGCSE or equivalent in Mathematics does not fulfill the entry requirement for BSc (Hons) in Psychology</i>

FOR BUILT ENVIRONMENT* PATHWAY

Entry requirement:	5Cs in SPM/IGCSE or equivalent, in relevant subjects including English and Mathematics
Recommended course combination:	English, Economics, Business Management and one further course (Accounting or Psychology) <i>*Excluding Civil Engineering</i>

FOR PSYCHOLOGY PATHWAY

Entry requirement:	5Cs in SPM/IGCSE or equivalent, in relevant subjects including English, Mathematics and Science
Recommended course combination:	English, Economics, Business Management and Psychology

FOR ACTUARIAL, COMPUTING SCIENCE AND DATA SCIENCE PATHWAY

Entry requirement:	5Cs in SPM/IGCSE or equivalent, in relevant subjects including English, Mathematics and Additional Mathematics
Recommended course combination:	English, Economics, Mathematics and one further course (Accounting or Computing*) <i>*Preferred courses for Data and Computing Sciences pathway</i>

WHAT CHOICE OF DEGREE* WILL I HAVE?

**Eligibility for your choice of degree programme is dependent on your chosen course combinations above and your final results of your Foundation programme. The pre-requisite subjects with specific grade requirements at the SPM/GCSE/equivalent levels (if required) must also be satisfied.*

- MA (Hons) Accounting and Business Finance
- BBA (Hons) Bachelor of Business Administration
- MA (Hons) Business and Finance
- MA (Hons) International Business Management
- MA (Hons) Marketing
- BSc (Hons) Psychology with Management
- BSc (Hons) Psychology
- BSc (Hons) Quantity Surveying
- BSc (Hons) Actuarial Science
- BSc (Hons) Computing Science
- BSc (Hons) Statistical Data Science

The above programmes are available at the Malaysia campus. You can take advantage of our unique Go Global transfer programme to study at our Edinburgh or Dubai campuses for at least one semester during your Undergraduate studies. It is also possible to transfer to more than one location over the Undergraduate studies. You may also enter into degree programmes available only in UK and/or Dubai right after your Foundation studies. For these programmes, please refer to our website and speak to an Education Consultant should you have any further queries. However, direct entry to the UK and Dubai campuses is contingent upon agreed progression rules and entry requirements in place. Students are advised to consult with Student Life before planning for campus transfer.



FOUNDATION PATHWAYS: FOUNDATION IN SCIENCE

DEGREE PATHWAYS

There are 6 broad degree pathways that articulate to a wide range of degree programmes at Heriot-Watt University globally: Engineering, Actuarial, Computing Science and Data Science, Accounting and Finance, Business and Built Environment and Psychology.

FOR ENGINEERING PATHWAY

Entry requirement:	5Cs in SPM/IGCSE or equivalent, in relevant subjects including English, Physics, Chemistry, Mathematics and Additional Mathematics
Recommended course combination:	English, Mathematics, Physics and one further course (Computing or Chemistry*) *required for Chemical Engineering

FOR ACTUARIAL, COMPUTING SCIENCE AND DATA SCIENCE PATHWAY

Entry requirement:	5Cs in SPM/IGCSE or equivalent, in relevant subjects including English, Physics, Mathematics and Additional Mathematics
Recommended course combination:	English, Mathematics, Physics and Computing

FOR ACCOUNTING AND FINANCE PATHWAY

Entry requirement:	5Cs in SPM/IGCSE or equivalent, in relevant subjects including English, Physics and Mathematics
Recommended course combination:	English, Mathematics, Physics and one further course (Computing or Psychology)

FOR BUSINESS AND BUILT ENVIRONMENT PATHWAY

Entry requirement:	5Cs in SPM/IGCSE or equivalent, in relevant subjects including English, Mathematics and Physics
Recommended course combination:	English, Mathematics, Physics and one further course (Computing or Psychology)

FOR PSYCHOLOGY PATHWAY

Entry requirement:	5Cs in SPM/IGCSE or equivalent, in relevant subjects including English, Mathematics and Physics
Recommended course combination:	English, Mathematics, Physics and Psychology

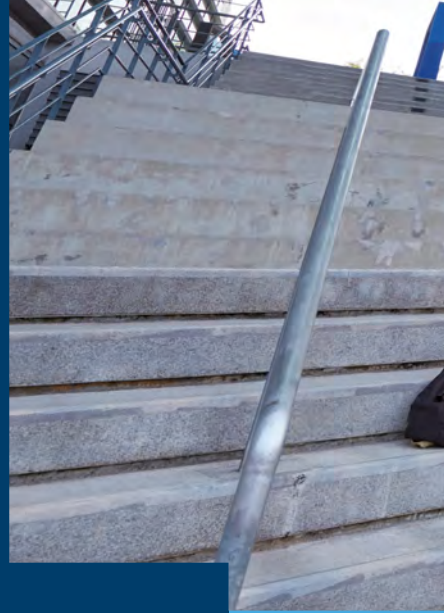
WHAT CHOICE OF DEGREE* WILL I HAVE?

*Eligibility for your choice of degree programme is dependent on your chosen course combinations above and your final results of your Foundation programme. The pre-requisite subjects with specific grade requirements at the SPM/GCSE/equivalent levels (if required) must also be satisfied.

- MEng Chemical Engineering
- MEng Electrical and Electronic Engineering
- MEng Mechanical Engineering
- MEng Civil Engineering
- BSc (Hons) Actuarial Science
- BSc (Hons) Computing Science
- BSc (Hons) Statistical Data Science
- MA (Hons) Accounting and Business Finance
- BBA (Hons) Bachelor of Business Administration
- MA (Hons) Business and Finance
- MA (Hons) International Business Management
- MA (Hons) Marketing
- BSc (Hons) Psychology with Management
- BSc (Hons) Psychology
- BSc (Hons) Quantity Surveying

The above programmes are available at the Malaysia campus. You can take advantage of our unique Go Global transfer programme to study at our UK or Dubai campuses for at least one semester during your Undergraduate studies. It is also possible to transfer to more than one location over the Undergraduate studies. You may also enter into degree programmes available only in UK and/or Dubai right after your Foundation studies. For these programmes, please refer to our website and speak to an Education Consultant should you have any further queries. However, direct entry to the UK and Dubai campuses is contingent upon agreed progression rules and entry requirements in place. Students are advised to consult with Student Life before planning for campus transfer.

DEVELOPING RESILIENT GRADUATES



The advent of the 4th Industrial Revolution has seen the creation of great innovations and the advancement of technology, but it has also created challenges for humankind and in particular our young people.

Heriot-Watt University is aware of the challenges the youth of today face in terms of maintaining a healthy mindset and managing stress, as well as developing meaningful social relationships in a landscape that has also become increasingly digitised. The University is a pioneer in global education offering world-class programmes enhanced with a unique Positive Education approach.

With Positive Education, the focus is on the development of students' emotional intelligence as they are taught coping strategies in managing their time effectively, cultivating a positive mindset, and developing self-confidence, interpersonal and communication skills and a sense of purpose.

At Heriot-Watt University Malaysia, we empower our students to be successful in their studies in terms of guidance and teaching methodology, in an environment engineered to facilitate their holistic growth from the Foundation level right up through their Undergraduate degree.



TRANSFORMING OUR YOUTH

Realising the important role our young people play today, Heriot-Watt University Malaysia has developed specific programmes that are designed to support every student to realise their full potential.

FIT-FOR-FUTURE

Through our Fit-For-Future programme students are encouraged to engage in a positive transformation by focusing on developing their emotional intelligence, creativity, understanding their own personalities, their strengths and weaknesses, and developing a long-term vision and mission. This is done by setting realistic SMART goals through engaging and interesting activities. Using a proven emotional intelligence framework, and engaging activities focusing on expressing positive emotions such as empathy and gratitude, students are taught self-awareness, self-management, social awareness and relationship management.

On completion of the programme, students will develop a strong sense of self-confidence, ability to express their emotions in a positive way, and be able to relate comfortably to their peers and better

manage their relationship with friends and family, providing a smooth transition and preparing them for the challenges of University studies.

The programme is open to students who have achieved a minimum of 5C's in relevant subjects in SPM, IGCSE or equivalent. The programme objectives are:

- Applying the techniques for a successful mindset
- Identifying your strengths, passion and potential
- Describing the four domains of emotional intelligence
- Setting SMART Goals
- Understanding team dynamics and what makes a successful team.

The following are some of the sessions under the programme:

- The Successful Mindset
- Rewiring Your Brain
- Emotional Intelligence
- Knowing Yourself
- Setting SMART Goals
- Building Social Capital
- Team Dynamics
- Career Planning
- Project Showcase



The EmPOWER Programme is a 4-level structured programme anchored by six developmental domains. These are designed to deliver experiential learning opportunities that provide a lifelong foundation for building emotional intelligence, resilience, and happiness.

We engage students in advanced personalised and self-driven developmental activities to give them a competitive advantage, enabling them to achieve their full potential when they graduate.

The first level, known as Watt Level of the EmPOWER Programme is compulsory for all students and will be offered in their first year of undergraduate degree studies. Watt Level focuses on Leading Self and Defining Impact and is delivered through POWER talk sessions conducted by a panel of experienced POWER speakers. The other three levels (Kilowatt, Megawatt and Gigawatt) are achieved through a more personalised approach developed by students with their Personal Tutors.

	Global citizenship, leadership and impact	Emotional intelligence, resilience and happiness	People skills	Creativity, innovation and entrepreneurship	Critical thinking and decision making	Employability and industrial relevance
WATT Knowing and leading self	<ul style="list-style-type: none"> Defining impact (impact statement) Leadership style awareness 	<ul style="list-style-type: none"> Self awareness Self management Active and healthy lifestyle 	<ul style="list-style-type: none"> Effective communication Time management Gratitude 	<ul style="list-style-type: none"> Divergent thinking Facilitating discovery Opportunity finding 	<ul style="list-style-type: none"> Brainology Thinking biases Brain neurology Reframing and positive framing 	<ul style="list-style-type: none"> Preparing CV LinkedIn profile Career planning Career fair Professional development plan
KILOWATT Leading teams	<ul style="list-style-type: none"> Influencing through impact Awareness of the global changes 	<ul style="list-style-type: none"> Social awareness Relationship management Return on failure 	<ul style="list-style-type: none"> Effective collaboration 	<ul style="list-style-type: none"> Lean startup Creating products, processes and services 	<ul style="list-style-type: none"> Evaluating claims Analysing inferences 	<ul style="list-style-type: none"> Business etiquette Applying knowledge in industrial contexts
MEGAWATT Leading communities	<ul style="list-style-type: none"> Widening impact Resolving ethical changes 	<ul style="list-style-type: none"> Leading at the happiness project 	<ul style="list-style-type: none"> Negotiation, mediation and persuasion 	<ul style="list-style-type: none"> Financial literacy Appreciating market and customers Raising funds 	<ul style="list-style-type: none"> Weighing decisions Analysing challenges 	<ul style="list-style-type: none"> Global industrial placement (Work Global) Creating opportunities for industrial networking Integrating commercial and industrial context to address community needs
GIGAWATT Leading enterprise	<ul style="list-style-type: none"> Global impact System thinking 	<ul style="list-style-type: none"> Supporting those under their care emotionally 	<ul style="list-style-type: none"> Lifelong learning 	<ul style="list-style-type: none"> Running an enterprise Blue ocean strategy 	<ul style="list-style-type: none"> Assessing risk 	<ul style="list-style-type: none"> Impacting industrial practice Creating jobs



CAREERS AND GRADUATE FUTURES (CGF)

Our award-winning Careers and Graduate Futures provides one of the most extensive and comprehensive careers education and professional development programmes of any higher education institution in the UK.

Heriot-Watt students and graduates benefit from professional, impartial and confidential career advice and guidance from specialist Career Advisers who focus on specific subject areas related to the University's academic disciplines.

Their office is always open to assist students about making informed career choices, managing their future career development, accessing opportunities to develop the skills employers demand and achieve their goals. They also organise a range of skills development workshops and a series of

careers fairs and employer presentations where you can network directly with graduate recruiters.

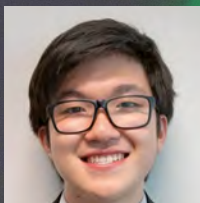
They are also on-hand to help if students:

- are unsure about their plans and how to make decisions
- want help with application forms or their CV
- need to know more about where and how to look for jobs
- want information or advice on postgraduate study
- need to practise their interview techniques

CGF also supports students and graduates by bringing job opportunities through GRADfutures, a platform available exclusively for students and graduates.

DAVID TEOH XING QIANG'S STORY

IN ACTUARIAL SCIENCE



DAVID TEOH XING QIANG
BSc (Hons) Actuarial Science

I'm very glad that I decided to pursue my tertiary education at Heriot-Watt University Malaysia. These past four years have been the time of my life. The things that I love about Heriot-Watt are the lecturers, the community, and the support I received throughout.

My lecturers have been very passionate in teaching our class about their various courses, answering our many questions, and making themselves available for consultation if we have questions to ask outside of class.

I feel supported by the staff here, having counseling sessions with our Student Success Advisor and Effective Learning Manager helped me to better manage the difficulties and stress of university life. All in all, choosing to study at Heriot-Watt University Malaysia was one of the best decisions I have ever made, and one that I will continue to be proud of for the rest of my life.

www.hw.ac.uk/malaysia

ACTUARIAL SCIENCE

BSc (Hons)

Intake:	September
Duration:	Full-time, 3 years
Fees:	See website for details: www.hw.edu.my/fees
Programme:	KPT/JPS (R/462/6/0008) (MQA/FA4167) 06/24

Actuaries manage risk and uncertainty and evaluate the likely impact of future events. Heriot-Watt University's Actuarial Science programme is world-famous for its excellence. It contains all the courses that are essential for ensuring a flying start to a career as an actuary whilst at the same time fostering highly transferable mathematical skills.

If you excel at mathematics, enjoy problem solving, and are looking for a degree that will prepare you for a rewarding career - both intellectually and financially - Actuarial Science could be the programme for you.

ACCREDITATION

Professional actuarial exams are essential for students pursuing a career in actuarial science. The Institute and Faculty of Actuaries (IFoA) offers these exams which assess the knowledge and skills of aspiring actuaries and are recognised globally as a benchmark for professional competence in the field.

For Heriot-Watt University Malaysia's Actuarial Science programme, the IFoA exams are a vital part of the curriculum. The programme is designed to prepare students for these exams and equip them with the knowledge and skills needed to succeed in the actuarial profession. Heriot-Watt University offers Actuarial Science students the opportunity to obtain exemptions for a maximum of 11 papers* from the Institute and Faculty of Actuaries' (IFoA's) professional exams, allowing them

to streamline their academic journey by recognising their prior coursework and providing a pathway towards achieving their actuarial qualifications. The degree is also accredited by the Royal Statistical Society and by the Malaysian Qualifications Agency (MQA).

* this relates to our MSc Actuarial Management programme.

We are also recognised by the Society of Actuaries (SOA) under Universities & Colleges with Actuarial Programs - Advanced Curriculum (UCAP-AC), which is the highest level of recognition in Malaysia.

CORE COURSES

YEAR 1

- Probability and Statistics A & B
- Multivariable Calculus and Real Analysis A & B
- Actuarial and Financial Mathematics
- Linear Algebra
- Algorithmic and Scientific Programming
- Data Science Life Cycle

YEAR 2

- Life Insurance Mathematics A & B
- Stochastic Processes
- Survival Models
- Statistical Models A & B
- Economics for the Professions
- Finance and Financial Reporting

YEAR 3

- Financial Markets and Investments
- Financial Derivatives
- Time Series & Machine Learning
- Risk Theory

Optional and elective courses available for Year 3 include:

- Further Statistical Methods
- Sustainability
- International Bonds and Currency Markets
- Optimisation
- Bayesian Inference and Computational Methods
- Database Management Systems
- Advanced Machine Learning
- Taxation (Malaysia)

ENTRY REQUIREMENTS

Refer to Summary of Entry Requirements at page 66-69

This programme is recognised by a number of organisations which offer generous merit and hardship scholarships. For more information, see page 70.

Accredited by



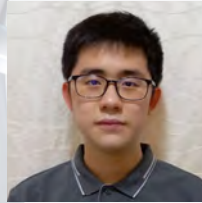
Institute
and Faculty
of Actuaries

ROYAL
STATISTICAL
SOCIETY
DATA | EVIDENCE | DECISIONS



BRYAN LOW ZHAO EN'S STORY

IN SCIENCE



BRYAN LOW ZHAO EN
Foundation in Science

The Fit-For-Future programme helped us meet new friends, understand more about ourselves, and learn the importance of skills like communication. It has also given us a glimpse into what university life would look like.

www.hw.ac.uk/malaysia

COMPUTING SCIENCE

BSc (Hons)

Intake:	September, January
Duration:	Full-time, 3 years
Fees:	See website for details: www.hw.edu.my/fees
Programme:	KPT/JPS (N/481/6/0833) (MQA/PA14530) 06/26

In today's era of digitisation, computer scientists and software engineers are leading the way in driving the latest advancements across a wide range of fields such as artificial intelligence, cybersecurity, bioinformatics, healthcare, and data informatics. Our BSc (Hons) Computing Science degree focuses on software development and algorithms, with the aim of creating robust and user-friendly systems for industry and commerce.

This programme is designed to provide a well-balanced mix of theoretical knowledge and practical experience, with a strong emphasis on the latest tools and techniques, to help you develop the next generation of software tools that other system contractors will use. Our curriculum is strongly supported by our academic staff's research expertise and industrial linkages, ensuring that students receive an all-rounded education.

ACCREDITATION

We have obtained the initial full accreditation from BCS, The Chartered Institute of IT, UK.

CORE COURSES

YEAR 1

- Software Development A and B
- Mathematics for Computer Science
- Introduction to Interaction Design
- Introduction to Computer Systems
- Introduction to Software Engineering
- Data Structures and Algorithms
- Database Management Systems

YEAR 2

- Software Engineering
- Data Communications and Networking
- Foundations 1 and 2
- Programming Languages
- Professional Development
- Operating Systems and Concurrency
- Hardware-Software Interface
- Industrial Training (Summer internship)

YEAR 3

- Project Research Methods and Requirements Engineering
- Computer Network Security
- Artificial Intelligence and Intelligent Agents
- Project: Design and Implementation
- Project: Testing and Presentation

Optional courses available for Year 3 include courses from the Artificial Intelligence or Data Science streams:

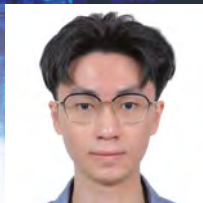
- Data Mining and Machine Learning
- Big Data Management
- Data Visualisation
- Applied Text Analytics
- Distributed and Parallel Technologies

ENTRY REQUIREMENTS

Refer to Summary of Entry Requirements at page 66-69.

ISAAC CH'NG PHANG CHERN'S STORY

IN BUSINESS AND FINANCE



ISAAC CH'NG PHANG CHERN
MA (Hons) Business and Finance

I had three years of remarkable experience while pursuing studies at Heriot-Watt University. I have acknowledged and learned from the adaptability and efficient management of Heriot-Watt University staff and lecturers. Despite the pandemic and having many restrictions within the university community, Heriot-Watt University Malaysia conducted many online activities and constantly checked up on students' welfare. With Heriot-Watt University's support, I have accomplished things that I never expected to be possible. I appreciate the lecturers and have always strived hard for excellent performance and the best results to express my gratitude and appreciation to them.

www.hw.ac.uk/malaysia

STATISTICAL DATA SCIENCE

BSc (Hons)

Intake:	September
Duration:	Full time, 3 years
Fees:	See website for details: www.hw.edu.my/fees
Programme:	KPT/JPS (R/462/6/0018) (MQA/FA8513) 06/27

ACCREDITATION

The application of statistical data science ranges from economics and medicine to social and environmental sciences. Our BSc (Hons) in Statistical Data Science provides a blend of both theoretical and applied elements of modern statistics and aims to give students the training in modelling, analysing, and interpreting real data that is required in the economy, industry, and research. The first year of the programme covers basic mathematics, probability, and statistics. The final two years focus on specialist topics of statistical modelling and advanced courses in mathematics and data science. A variety of statistical computer packages are used.

Our programme is accredited by the Royal Statistical Society. It is possible for students who have completed the programme to apply for some exemptions from the Institute and Faculty of Actuaries (IFoA) professional examinations.

We have obtained the initial full accreditation from BCS, The Chartered Institute of IT, UK.

CORE COURSES

YEAR 1

- Probability and Statistics A & B
- Multivariable Calculus and Real Analysis A & B
- Actuarial and Financial Mathematics
- Linear Algebra
- Algorithmic and Scientific Programming
- Data Science Life Cycle

YEAR 2

- Statistical Models A & B
- Further Statistical Methods
- Stochastic Processes
- Bayesian Inference and Computational Methods

Optional and elective courses available for Year 2 include:

- Artificial Intelligence and Intelligent Models
- Interactive Design
- Survival Models
- Database Management Systems
- Ordinary Differential Equations

YEAR 3

- Statistics Dissertation A & B
- Time Series & Machine Learning

Optional and elective courses available for Year 3 include:

- Data Assimilation
- Optimisation
- Financial Markets and Investments
- Sustainability
- Risk Theory
- Database Management Systems
- Big Data Management
- Statistics Special Topic
- Financial Derivatives
- Advanced Machine Learning

ENTRY REQUIREMENTS

Refer to Summary of Entry Requirements at page 66-69.

Accredited by



LEW KAI SHEN'S STORY

IN QUANTITY SURVEYING



LEW KAI SHEN
BSc (Hons) Quantity Surveying

What I enjoy the most at Heriot-Watt is the way class is conducted. The practical session of the course allows me to gain experience for a real world job in the future. I think that this is very important, as what one may learn from a book may not be comprehensive enough for us to fully understand a concept.

www.hw.ac.uk/malaysia

QUANTITY SURVEYING

BSc (Hons)

Intake:	September, January
Duration:	Full-time, 3 years
Fees:	See website for details: www.hw.edu.my/fees
Programme:	KPT/JPS (R/0734/6/0001) (MQA/FA4369) 06/24

ACCREDITATION

Our Quantity Surveying discipline is internationally recognised for the quality of its research and teaching and is Scotland's top rated construction management department. Our degree programmes equip graduates with the knowledge and experience necessary to ensure that built environment projects are sustainable, cost efficient and contracted to the highest standards.

Quantity surveying is about providing clients of the construction industry with financial, contractual and technical advice, and ensuring they get value for money from buildings they construct. The modern quantity surveyor is a construction professional who may be involved in all stages of the design and construction process, from providing business strategy advice, working with architects and design team consultants through to overseeing the onsite construction phase. The quantity surveyor has a sound understanding of construction technology, project cost planning and control and contractual issues.

This programme is accredited by the Royal Institution of Chartered Surveyors (RICS), Chartered Institution of Civil Engineering Surveyors (ICES), and Board of Quantity Surveyors Malaysia (BQSM), as well as the Malaysian Qualifications Agency (MQA).

CORE COURSES

YEAR 1

- Building Services Technology
- Construction Technology 2
- Commercial Law
- Surveying and Monitoring in the Built and Natural Environment
- Cost Modelling and Measurement
- eConstruction
- Principles of Property Valuation
- The Economy

YEAR 2

- Safety Management and Site Establishment
- Construction Technology 3
- Procurement and Contracts
- Design Cost Planning and Control
- Measurement and Cost Evaluation
- Design for Construction
- Design Issues
- Business Management in the Built Environment

YEAR 3

- Cost and Value Management
- QS Practice
- Innovation in Construction Practice
- Design Project
- Construction Information Management
- Dissertation

Students take a total of 8 courses per year including core and optional courses.

For full details of the optional and elective courses please refer to our website.

ENTRY REQUIREMENTS

Refer to Summary of Entry Requirements at page 66-69.

This programme is recognised by a number of organisations which offer generous merit and hardship scholarships. For more information, see page 70.

Accredited by



NICOLE CHANG WEN WEN'S STORY

IN ACCOUNTING AND
BUSINESS FINANCE



NICOLE CHANG WEN WEN
MA (Hons) Accounting and
Business Finance

My experience and journey in Heriot-Watt was nothing but remarkable. More specifically, Heriot-Watt University Malaysia's EmPOWER Programme has brought me to understand that just being academically competent is not enough, but setting our minds towards the right growth is equally important too.

I also took part in Heriot-Watt's Go Global Programme which gave me the opportunity to step out of my comfort zone and experience new things. It is here in Edinburgh where I had the privilege to join my current firm. Transferring to the Edinburgh campus was a whole new journey, or you could say it is the start of a new beginning for me. Thank you for bringing me to where I am today!

www.hw.ac.uk/malaysia

ACCOUNTING AND BUSINESS FINANCE

MA (Hons)

Intake:	September, January
Duration:	Full-time, 3 years
Fees:	See website for details: www.hw.edu.my/fees
Programme:	KPT/JPS (R/344/6/0452) (MQA/FA7011) 03/26

ACCREDITATION

Our Accounting and Business Finance programme is a specialist degree, particularly suited to those seeking entry into the accountancy and finance profession. Graduates of this programme can embark on wide-ranging career paths, including assurance, taxation, advisory, financial management and financial services.

The programme has been accredited by the Institute of Chartered Accountants in England and Wales (ICAEW), Association of Chartered Certified Accountants (ACCA), Chartered Institute of Management Accountants (CIMA) and Certified Practising Accountants (CPA) Australia. Graduates are eligible to apply for exemptions from the following professional bodies:

ACCA: up to 9 papers*

ICAEW: up to 8 papers*

CIMA: up to 11 papers*

CPA Australia: Foundation exams*

*subject to results obtained by students; students must join the programme at Heriot-Watt University Malaysia from Year 1.

This programme is accredited by the Malaysian Qualifications Agency (MQA).

ACCA ACCELERATE PROGRAMME:

This programme is also among the few selected in the region by ACCA to run the ACCA Accelerate programme, allowing students to take the remaining 4 papers with ACCA during their second year onwards, giving them an early head-start to a career in accounting and finance.

CORE COURSES

YEAR 1

- Principles of Accounting
- Fundamentals of Finance
- Introductory Economics
- Management in a Global Context
- Financial Accounting
- Management Accounting in Organisations
- Finance and Financial Statistics
- Financial Markets Theory

YEAR 2

- Intermediate Financial Accounting
- Management Accounting Techniques and Decisions
- Business Research Methods
- Choose 5 optional courses

Optional courses available in Year 2 include Corporate Financial Theory, Introduction to Commercial Law, Auditing and Assurance, Taxation in Malaysia, Business Law and the Law of Corporate Governance. In addition, students are required to complete the Industrial Training course in Year 2.

YEAR 3

- Choose 6 from optional courses across both semesters
- Accounting and Finance Dissertation

Optional courses in Year 3 include Accounting, Information Systems and Technology, Governance and Professional Ethics, Case Studies in Financial Management, Advanced Financial Accounting, Strategic Management Accounting, Contemporary Issues in Finance.

Students take a total of 8 courses per year including core, optional and elective courses/projects. For full details of the optional and elective courses please refer to our website.

ENTRY REQUIREMENTS

Refer to Summary of Entry Requirements at page 66-69.

The degree of Master of Arts (MA) is an Honours degree, awarded by Heriot-Watt and the ancient universities in Scotland and the UK including Aberdeen, Dundee, Edinburgh, Glasgow, St Andrews, Cambridge and Oxford. At other universities in Scotland and the UK, undergraduate degrees in the arts, liberal arts, humanities or social sciences are awarded as Bachelor of Arts (BA).

This programme is recognised by a number of organisations which offer generous merit and hardship scholarships. For more information, see page 70.

Note: Courses are subject to changes.

Accredited by

Think Ahead  

 **ICAEW**  Chartered Institute of Management Accountants



BUSINESS AND FINANCE

MA (Hons)

Intake:	September
Duration:	Full-time, 3 years
Fees:	See website for details: www.hw.edu.my/fees
Programme:	KPT/JPS (R/340/6/0490) (MQA/FA4165) 11/24

ACCREDITATION

Business management and finance professionals work with executive and management teams to provide expert advice on the impacts and deployment of resources and processes throughout an organisation.

At Heriot-Watt, you will learn how to apply business management and finance knowledge and skills to a range of different managerial, business and problem-solving situations, financial decisions, compliance issues and governance.

This undergraduate MA Honours degree explores the interface between business and finance, in particular the management and business implications of financial decision making. It is a specialist joint degree with equal emphasis given to the subject areas of business and finance. The degree is particularly suited to students who wish to gain a firm grounding in business and management, but with an insight into the finance and financial operations of businesses and organisations.

This programme is accredited by the Malaysian Qualifications Agency (MQA). This degree has been acknowledged as incorporating at least 70 percent of the CFA Program Candidate Body of Knowledge (CBOK) and placing emphasis on the CFA Institute Code of Ethics and Standards of Professional Conduct within the programme. This degree programme positions students to obtain the Chartered Financial Analyst

(CFA®) charter, which has become one of the most respected and recognised investment credentials in the world. We also acknowledge CFA credentials as entry criteria, those who have passed Level II of the CFA Programme are eligible to apply for direct entry into year 2.

CORE COURSES

YEAR 1

- Fundamentals of Finance
- Personal Finance and Investment Ethics
- Financial Markets Theory
- Quantitative Methods
- Organisational Behaviour
- Choose 3 elective courses'

Elective courses available in Year 1 include Introductory Economics, Management in a Global Context, Management Accounting in Organisations, Human Resource Management, Fundamentals of Marketing, Marketing Perspectives and Commercial Law, Introductory Economics, Management in a Global Context, Management Accounting in Organisations

YEAR 2

- Financial Technology
- Mergers and Acquisitions
- Corporate Financial Theory
- Strategic Management
- Applied Financial Modelling in Python
- Business Research Method
- Financial Derivatives
- Choose 1 optional courses

Optional courses available in Year 2 include Employment Law, Business Venturing, Consumer Behaviour, Resourcing and Talent Management and Project Management.

YEAR 3

- Management or Finance Dissertation
- Banking
- International Bonds and Currency Markets
- Contemporary Issues in Finance
- Choose 3 optional courses

Optional courses available in Year 3 include Global Business Analysis 1, International Entrepreneurship, The Contemporary Workforce, Retail Marketing, Changing Trends in Employment, Marketing Sustainability, Marketing and Management of SMEs and Global Business Analysis 2.

Students take a total of 8 courses per year including core, optional and elective courses/projects. For full details of the optional and elective courses please refer to our website.

ENTRY REQUIREMENTS

Refer to Summary of Entry Requirements at page 66-69.

The degree of Master of Arts (MA) is an undergraduate Honours degree, awarded by Heriot-Watt and the ancient universities in Scotland and the UK including Aberdeen, Dundee, Edinburgh, Glasgow, St Andrews, Cambridge and Oxford. At other universities in Scotland and the UK, undergraduate degrees in the arts, liberal arts, humanities or social sciences are awarded as Bachelor of Arts (BA).

This programme is recognised by a number of organisations which offer generous merit and hardship scholarships. For more information, see page 70.

Note: Courses are subject to changes

Affiliated with



INTERNATIONAL BUSINESS MANAGEMENT

MA (Hons)

Intake:	September, January
Duration:	Full-time, 3 years
Fees:	See website for details: www.hw.edu.my/fees
Programme:	KPT/JPS (R/340/6/0657) (MQA/FA7425) 03/26

ACCREDITATION

As the modern business world becomes increasingly complex, understanding the fundamental way in which businesses and organisations operate - how they develop their strategies and make key decisions - is vital.

Our International Business Management programme helps you to examine businesses and organisations; understand their structures and workings, people and decision making processes; and then relate the theory to actual business situations to prepare yourself for the real world.

You will develop valuable communication, problem solving and teamwork skills. Our programmes also offer relevant hands-on experience.

All International Business Management degrees provide a strong grounding in the principles of modern business management and also introduce the more functional areas of business and management.

International Business Management students choose from a range of business-oriented courses, which allow students to tailor their degree to meet their career needs and aspirations.

This programme is accredited by the Malaysian Qualifications Agency (MQA). In accordance with our normal practice, our professionally orientated programmes are designed to meet the educational requirements for membership of relevant professional institutions. In addition to recognition within Malaysia, we seek accreditation by the relevant UK or international professional bodies in accordance with their standard procedures..

CORE COURSES

YEAR 1

- Human Resource Management
- Fundamentals of Marketing
- Intercultural Issues in Business and Management
- Management in a Global Context
- Operations Management
- Business Skills for the Machine Age
- Enterprise: Concepts and Issues
- *Options or Electives*

YEAR 2

- Logistics and Supply Chain Management
- Strategic Management
- Leading in Organisations
- Business Research Methods
- *Options or Electives*

YEAR 3

- Management Dissertation 1
- Management Dissertation 2
- Global Business Analysis 1 - States and Markets
- Global Business Analysis 2 - Global Trends and Risks
- *Options*

STREAMS

Students shall select any 1 Stream below.

STREAM 1 MARKETING

- Consumer Behaviour
- Integrated Marketing Communications
- Retail Marketing
- Marketing Sustainability

STREAM 2 HUMAN RESOURCE MANAGEMENT

- Organisational Behaviour
- Resourcing and Talent Management
- Employment Law
- The Contemporary Workforce
- Changing Trends in Employment

STREAM 3 ENTERPRISE

- Business Venturing
- Innovation Management
- International Entrepreneurship
- Marketing and Management of SMEs

STREAM 4 OPERATIONS AND ANALYTICS

- Quantitative Methods
- Project Management
- Innovation Management
- Business Analysis and Consulting

STREAM 5 GENERAL

- Commercial Law
- *Options or Electives*

Note: The choice of the Stream Course is subject to a number of mandatory courses in a semester and meeting the pre-requisite. The offer of the courses is subject to changes.

For full details of the optional and elective courses please refer to our website.

ENTRY REQUIREMENTS

Refer to Summary of Entry Requirements at page 66-69.

The degree of Master of Arts (MA) is an undergraduate Honours degree, awarded by Heriot-Watt and the ancient universities in Scotland and the UK including Aberdeen, Dundee, Edinburgh, Glasgow, St Andrews, Cambridge and Oxford. At other universities in Scotland and the UK, undergraduate degrees in the arts, liberal arts, humanities or social sciences are awarded as Bachelor of Arts (BA).

Note: Courses are subject to changes.



BACHELOR OF BUSINESS ADMINISTRATION

BBA (Hons)

Intake:	September, January
Duration:	Full-time, 3 years
Fees:	See website for details: www.hw.edu.my/fees
Programme:	KPT/JPS (R/345/6/0564) (MQA/FA4166) 05/24

ACCREDITATION

The Bachelor of Business Administration (Hons) degree, known as BBA (Hons), aims to develop students' understanding of the area of business administration and management, and develop practical skills appropriate for careers in this area.

Theory and practice are given equal emphasis to provide a holistic understanding of the role of business administration as well as knowledge of and skills associated with business start-up, growth and innovation. You will develop valuable communication, problem solving and teamwork skills.

This programme is accredited by the Malaysian Qualifications Agency (MQA). In accordance with our normal practice, our professionally orientated programmes are designed to meet the educational requirements for membership of relevant professional institutions. In addition to recognition within Malaysia, we seek accreditation by the relevant UK or international professional bodies in accordance with their standard procedures.

CORE COURSES

YEAR 1

- Operations Management
- Business Skills for the Second Machinery Age
- Choose 6 optional courses

YEAR 2

- Business Research Methods
- Strategic Management
- Choose 6 optional or elective courses

YEAR 3

- Global Business Analysis 1- States and Markets
- Global Business Analysis 2 - Global Trends and Risks
- Choose 4 optional courses

ACROSS BOTH SEMESTERS

- Dissertation

Optional courses available from a wide range of business subjects such as Marketing, Human Resource Management, Management, Law and Entrepreneurship. Elective courses are also available.

Students take a total of 8 courses per year including core, optional and elective courses/projects.

For full details of the optional and elective courses please refer to our website.

ENTRY REQUIREMENTS

Refer to Summary of Entry Requirements at page 66-69.

Note: Courses are subject to changes.

MARKETING

MA (Hons)

Intake: September, January

Duration: Full-time, 3 years

Fees: See website for details:
www.hw.edu.my/fees

Programme: KPT/JPS (N/0415/6/0002)
(MQA/PA15449) 05/27

ACCREDITATION

This programme is accredited by the Malaysian Qualifications Agency (MQA). In accordance with our normal practice our professionally orientated programmes are designed to meet the educational requirements for membership in relevant professional institutions. In addition to recognition within Malaysia, we seek accreditation by the relevant UK or international professional bodies in accordance with their standard procedures.

MA Marketing is part of the Chartered Institute of Marketing (CIM) Graduate Gateway Programme. This degree was developed in line with the CIM professional award criteria and upon completion you will gain a professional CIM accreditation. Students can choose to study for the Certificate and/or Diploma in Professional Marketing or Professional Digital Marketing alongside their degree, and study for five years after graduating.

CORE COURSES

YEAR 1

- Quantitative Methods
- Fundamentals of Marketing
- Human Resource Management
- Consumer Behaviour
- Business Skills for the Second Machine Age
- Operations and Supply Chain Management

YEAR 2

- Global Strategic Marketing
- Digital Analytics for Marketing
- Responsible Marketing
- Project Management
- Business Research methods
- Integrated Marketing Comms
- Marketing Project
- Innovation Management

YEAR 3

- Leisure Marketing
- Retail Marketing or International Entrepreneurship
- Branding
- Digital Marketing
- Marketing Sustainability

ACROSS BOTH SEMESTERS

- Dissertation

ENTRY REQUIREMENTS

Refer to Summary of Entry Requirements at page 66-69.

The degree of Master of Arts (MA) is an undergraduate Honours degree, awarded by Heriot-Watt and the ancient universities in Scotland and the UK including Aberdeen, Dundee, Edinburgh, Glasgow, St Andrews, Cambridge and Oxford. At other universities in Scotland and the UK, undergraduate degrees in the arts, liberal arts, humanities or social sciences are awarded as Bachelor of Arts (BA).

CHEMICAL ENGINEERING

MEng

Intake:	September, January
Duration:	Full-time, 4 years
Fees:	See website for details: www.hw.edu.my/fees
Programme:	KPT/JPS (R/524/6/0041) (MQA/FA5107) 11/26

ACCREDITATION

Chemical engineering is a broad-based discipline combining mathematics and science, which has an important - though often hidden - impact on society. It is about transforming raw materials into valuable and desirable products, creating durable products and services, and producing the enabling technology and know-how for a sustainable future.

Chemical engineers' input is valuable at every stage of a project from the initial idea through to the product emerging at the end of the line and even to the market. Chemical engineers are highly valued by employers for their all-round-skills and job prospects are excellent. Graduates are employed in many sectors from fine chemicals and food products to utility suppliers, polymers and the oil industry.

This degree will allow you to understand the chemical and physical principles underlying chemical engineering concepts, and help you to cultivate the ability to apply your skills to real practical engineering challenges. It would also develop your transferable skills in communication, team working, industrial and commercial awareness and career management.

This programme is accredited by the Malaysian Qualifications Agency (MQA). Besides, the programme is accredited and recognised by the Board of Engineers Malaysia (BEM). Moreover, the programme

is internationally recognised and accredited by the Institute of Chemical Engineers (IChemE). Our MEng qualification is designed to satisfy the academic requirements set by the Engineering Council UK for registration as a Chartered Engineer (CEng) status.

CORE COURSES

YEAR 1

Covers important themes focused on fundamentals of chemical engineering with a mini group-based design project consolidates the topics covered in this year of study.

- Industrial Chemical Processes
- Fluid Mechanics
- Chemical Thermodynamics
- Introductory Chemical Kinetics
- Maths Engineers & Scientists 3
- Thermodynamics
- Heat Transfer
- Process Design A
- Mathematical Modeling for Chemical E

YEAR 2

Provides opportunities to analyse key operations in the industry, particularly the separation, reactions and how processes are controlled. The knowledge for this year is consolidated in a multi-disciplinary group-based project.

- Separation Processes A
- Chemical Reaction Engineering
- Process Control
- Sustainable Development and Engineering Management
- Separation Processes B
- Multiphase Thermodynamics
- Process Health and Safety
- Bioprocessing

YEAR 3

A central theme is the advanced analysis of key processing operations and their modeling and simulation. The major capstone group-based technical design project is also undertaken at this stage.

- Separation Processes C
- Sustainability Management and Process Economics
- Process Optimisation, Integration and Analysis
- Particle Technology
- Chemical Reaction, Modeling and Control
- Applied Transport Phenomena
- Process Engineering Design Project
- Industrial Training (Min 8 weeks)

YEAR 4

Optional courses from a range of specialist engineering subjects. Two major projects are taken in this year: an in-depth individual research project; and an enhanced group-based design project, where students can demonstrate their skills in process design and commercial awareness, culminating in a board-style presentation to senior industry leaders.

- MEng Design Project
- MEng Research Project
- Plus 4 optional courses related to Oil & Gas Technology, Bioprocessing, Energy Engineering, Environmental Engineering, and Formulation. Engineering

ENTRY REQUIREMENTS

Refer to Summary of Entry Requirements at page 66-69.

Accredited by



VALENTINA NICSON'S STORY

IN CIVIL ENGINEERING



VALENTINA NICSON
MEng-Civil Engineering

As an international student of civil engineering at Heriot Watt University it was exciting and fun especially as I got to experience face to face learning and teaching along with online lectures. As a student, I received a lot of assistance in terms of career such as career vacancies from the lecturers or the career department of the school.

Throughout my whole journey of studying at Heriot-Watt, I found all the learning materials are accessible and guided well by the lecturers. What I loved the most is the friendly lecturers, who were all willing to help on tutorials and provide a lot of advice and guidance which gave us better insights. Moreover, group projects throughout my civil engineering course allowed me to bond with my course friends and improve my communication skills. The experience was fun and worth the four years of study. I would highly recommend students to join Heriot Watt University Malaysia.

www.hw.ac.uk/malaysia

CIVIL ENGINEERING

MEng

Intake: September

Duration: Full-time, 4 years

Fees: See website for details:
www.hw.edu.my/fees

Programme: MEng: KPT/JPS (R/526/6/0108)
(MQA/FA6195) 08/27

ACCREDITATION

The programme covers the main civil engineering disciplines of structures, geotechnics, water, environmental, highway and project management that equips students with the key skills and knowledge required to become chartered civil engineers.

The core curriculum begins with fundamentals in all main subject areas, concentrating on analysis and materials behaviour followed by increasing focus on design and management in the specialisation years. Throughout, there is also an emphasis on the personal development of students within the professional environment. The career prospects for our graduates includes these high demand sectors for civil engineers namely the construction, utilities, energy and transportation sectors.

This degree is internationally accredited by the Institution of Civil Engineers (ICE), Institution of Structural Engineers (IStructE), Chartered Institution of Highways and Transportation (CIHT) and Institute of Highway Engineers (IHE) on behalf of the Engineering Council for the purposes of fully meeting the academic requirement for registration as a Chartered Engineer (CEng). Our MEng programme is also recognised by the Board of Engineers Malaysia (BEM) and fully accredited by the Malaysian Engineering Accreditation Council (EAC).

CORE COURSES

YEAR 1

- Analysis of Determinate Structures
- Hydraulics and Hydrology A
- Surveying and GIS
- Mathematics for Engineers and Scientists 3
- Civil Engineering Materials
- Stress Analysis and Element Strength
- Design Studies A - Problem Solving
- Statistics for Science

YEAR 2

- Indeterminate Structures
- Geology and Soil Properties
- Design of Steel Elements
- Transport Design, Infrastructure and Society
- Hydraulics and Hydrology B
- Geotechnics A - Intro to Soil Mechanics
- Design of Concrete Elements
- Environmental Technology and Management

YEAR 3

- Geotechnics B - Soil Strength
- Civil Engineering Design Project
- Foundation Engineering
- Industrial Training

Plus 5 optional courses related to structural engineering, transportation engineering and water engineering.

YEAR 4

- Civil Engineering Professional Design Project
- Dissertation 1 Civil Engineering Discipline
- Dissertation 2 Civil Engineering Discipline

Plus 4 optional courses related to structural engineering, water engineering and project management.

For full details of optional courses, please refer to our website.

ENTRY REQUIREMENTS

Refer to Summary of Entry Requirements at page 66-69.

Accredited by



ELECTRICAL AND ELECTRONIC ENGINEERING

MEng

Intake:	September
Duration:	Full-time, 4 years
Fees:	See website for details: www.hw.edu.my/fees
Programme:	MEng: KPT/JPS (R/523/6/0265) (MQA/FA6194) 08/27

ACCREDITATION

Electrical and electronic engineering plays a significant role in modern society. From the electricity that powers our lives to the mobile phones that enable communication and provide entertainment, the technologies around us inspire wonder. Highly trained engineers are needed to specify and design such systems and devise electronic engineering solutions for future challenges such as electric transportation, renewable energy generation, robot systems and medical diagnostics. An Engineering degree can provide access to exciting global opportunities.

This programme is accredited by the Malaysian Qualifications Agency (MQA). Our MEng qualification is designed to satisfy the academic requirements set by the Engineering Council UK for registration as a Chartered Engineer (CEng) status.

Chartered engineers enjoy excellent prospects, enhanced employability and high salaries.

Our MEng programme is accredited and recognised by the Board of Engineers Malaysia (BEM). Graduates from this programme are eligible for registration with BEM under the Electrical Discipline.

For registration by the Board of Engineers Malaysia (BEM), an additional year to complete the MEng programme is required plus a minimum of 10 weeks industrial placement.

CORE COURSES

YEAR 1

- Circuits and Analysis
- Digital Design and Programming
- Mathematics for Engineers and Scientists 3
- Sustainable Development and Engineering Management
- Mathematics for Engineers and Scientists 4
- Intro Electricity and Magnetism
- Electrical Power and Machines
- Computer Architecture and Embedded Systems

YEAR 2

- Semiconductor Electronics
- System Project
- Engineering Mathematics and Statistics
- Time Frequency and Signal Analysis
- Signals and Systems
- Electrical Energy Systems
- Electromagnetism

YEAR 3

- MEng Group Project
- Professional and Industrial Studies
- MEng Group Project 2
- Industrial Training

Students undertake a compulsory industrial training placement after completing Year 3. Optional and elective courses available for Year 3 include:

- Linear Control
- Digital Signal Processing
- Advanced Analogue Electronics
- Sustainable Energy and Power Systems
- Communication Devices and Systems

YEAR 4

MEng students do Project 1 and Project 2 plus four optional courses:

- Electrical Power System
- Digital Signal Processing
- Distributed Generation
- Renewable Generation and Conversion

Students take a total of eight core and optional courses as well as projects each year.

MEng ELECTRICAL AND ELECTRONIC ENGINEERING

All students by default will be enrolled into the MEng programme at the point of entry.

ENTRY REQUIREMENTS

Refer to Summary of Entry Requirements at page 66-69.

Accredited by



IET The Institution of Engineering and Technology



MECHANICAL ENGINEERING

MEng (Hons)

Intake:	September, January
Duration:	Full-time, 4 years
Fees:	See website for details: www.hw.edu.my/fees
Programme:	MEng: KPT/JPS (R/521/6/0092) (MQA/FA5108) 11/26

ACCREDITATION

Mechanical engineers play key roles in every industrial sector which can range from transportation, energy, and aerospace to packaging, manufacturing and maintenance, processing, building and infrastructure. Today, this is even more so with the increasing reliance in machinery and automation across all sectors across the globe.

The job scope of Mechanical Engineers offers varied and exciting work environments where many skills are brought together to create innovative products and designs of systems and machineries.

The degree aims to produce graduate engineers who are able to meet the challenging needs of today's and tomorrow's industries and society. The curriculum is rigorous to ensure a solid foundation in current mechanical engineering principles enriched with industrial relevance and group work.

This programme is accredited by the Malaysian Qualifications Agency (MQA). MEng are internationally recognised by the Institute of Mechanical Engineers (IMechE). Our MEng qualification is designed to satisfy the academic requirements set by the Engineering Council UK for registration as a Chartered Engineer (CEng) status.

Chartered Engineers enjoy excellent prospects, enhanced employability and high salaries.

Our MEng programme is accredited and recognised by the Board of Engineers Malaysia (BEM) and fully accredited by the Malaysian Engineering Accreditation Council (EAC).

CORE COURSES

YEAR 1

- Design and Manufacture 2
- Fluid Mechanics A
- Mathematics for Engineers and Scientists 3
- Mathematics for Engineers and Scientists 4
- Mechanics of Materials A
- Dynamics
- Electrical Power and Machines
- Thermodynamics A

YEAR 2

- Sustainable Development and Engineering Management
- Design and Manufacture 3 and 4
- Mechanics of Materials B
- Fluids Mechanics B
- Vibration Analysis and Control Engineering
- Thermodynamics B
- Automotive Technologies 1 (optional)
- Energy Studies (optional)

YEAR 3

- Engineering Design
 - Engineering Manufacture
 - Group Project 1
- Optional courses:
- Fluids 1
 - Heat Exchangers and Heat Transfer
 - Dynamics 1
 - Advanced Thermodynamics Applications
 - Dynamics 2
 - Advanced Mechanics of Materials 1
 - Fluids 2

Students undertake a compulsory industrial training placement.

YEAR 4

- Failure Accident Analysis
- Group Project 2 and 3
- Professional and Industrial Studies
- Computational Fluid Dynamics with Heat Transfer
- Specialist Engineering Technologies 2
- Individual Project

Students take a total of 8 courses per year including core, optional and elective courses/projects. For full details of the optional and elective courses please refer to our website.

MEng MECHANICAL ENGINEERING

BEng students who meet the progression requirements for the MEng programme may transfer programmes at the end of Year 2.

ENTRY REQUIREMENTS

Refer to Summary of Entry Requirements at page 66-69.

Accredited by



AMIR TAZREE'S STORY

IN PSYCHOLOGY

4



AMIR TAZREE
BSc (Hons) Psychology
Process Executive at Cognizant,
Teaneck, New Jersey USA

Doing my major at Heriot-Watt University Malaysia opened up many doors for me because the beauty of the course is that it covers a range of psychological topics (e.g., forensic psychology, psychoeducation and many more). This allows those who don't necessarily know exactly what field of psychology they want to pursue to understand different scopes of psychology and be exposed to new knowledge they might not be aware of.

www.hw.ac.uk/malaysia

PSYCHOLOGY

BSc (Hons)

Intake: September, January

Duration: Full-time, 3 years

Fees: See website for details:
www.hw.edu.my/fees

Programme: KPT/JPS (R/311/6/0081)
(MQA/FA8056) 04/26

Our Psychology graduates have a strong record of employment, building careers in business, teaching, counselling, nursing, probation work and market research.

Psychology is the science of behaviour and the mind. It uses a variety of scientific methods to explore key areas, including the influence that our biology has on behaviour, the ways in which we develop from early infancy to adulthood; the ways in which we perceive, think, solve problems and make decisions; and the way we interact with each other. All of these approaches enable theories to be developed and tested within psychology. Our programmes focus on challenges in the real world and consider how psychology can help us address them.

Psychologists work in settings such as education, health and mental ill-health, sport and exercise, systems design, the environment, and forensic and criminological analysis, where theory and practice come together.

BSc (Hons) Psychology is taught across Heriot-Watt University's three main global campuses in Edinburgh, Dubai, and Malaysia. This means our students can easily transfer for one semester or more across our campuses and continue to study the same content whilst enjoying extremely beneficial life experiences.

ACCREDITATION

Both of our undergraduate Psychology programmes at the Malaysia Campus are accredited by the Malaysian Qualifications Agency (MQA), and the British Psychological Society (BPS).

CORE COURSES

YEAR 1

- Cognitive Psychology
- Development Psychology
- Philosophy and History of Psychology
- Research Methods and Analysis 3 and 4
- Social Psychology
- Human Resource Management
- Organisational Behavior

YEAR 2

- Cognition Across the Lifespan
- Cross-cultural Psychology
- Forensic Psychology
- Health Psychology
- Industrial Training (June to August)
- Research Methods and Analysis 5 and 6
- Biological Psychology
- Social Cognition and Personality

YEAR 3

- Advanced Social Psychology
- Cognitive Rehabilitation
- Neuropsychology
- Psychology and Mental Health
- Psychology of Education
- Research Project 1 and 2
- Workplace Psychology

Students take a total of 8 courses per year as per the list above.

ENTRY REQUIREMENTS

Refer to Summary of Entry Requirements at page 66-69.

Accredited by



the british
psychological society
promoting excellence in psychology

PSYCHOLOGY WITH MANAGEMENT

BSc (Hons)

Intake:	September, January
Duration:	Full-time, 3 years
Fees:	See website for details: www.hw.edu.my/fees
Programme:	KPT/JPS (R/311/6/0075) (MQA/FA5343) 08/25

Psychology is the scientific study of the relationship between mind and behaviour. It asks why people, in general, behave as they do and why some people behave in unexpected or atypical ways. Findings from psychological studies help us to enhance people's everyday experiences and improve lives.

Psychologists employ a wide range of research skills such as observation, surveys and experiments. This Bachelor's degree aims to introduce you to these scientific methods and the critical evaluations that go into answering important questions from a psychological perspective.

The psychology component of the programme (70%) covers the discipline's main areas, namely social psychology, developmental psychology, cognitive psychology, biological psychology, individual differences and research methods, and emphasises their application to various employment-related contexts. The management component of the programme (30%) introduces a range of topics that are relevant to psychology such as consumer behavior, marketing, human resource management and project management.

BSc (Hons) Psychology with Management is taught across Heriot-Watt University's three main global campuses in Edinburgh, Dubai, and Malaysia. This means our

students can easily transfer for one semester or more across our campuses and continue to study the same content whilst enjoying extremely beneficial life experiences.

CORE COURSES

YEAR 1

- Cognitive Psychology
- Developmental Psychology
- Human Development and Intelligence
- Research Methods and Analysis 3 and 4
- Philosophy and History of Psychology
- Social Psychology
- Two courses from Business Management (Human Resource Management, Organisational Behaviour)

YEAR 2

- Biological Psychology
- Cognition across the Lifespan
- Cross-cultural Psychology
- Industrial Training (June to August)
- Biological Psychology
- Research Methods and Analysis 5 and 6
- Social Cognition and Personality
- Two courses from Business Management (Business Venturing, Innovation Management)

YEAR 3

- Advanced Social Psychology
- Neuropsychology
- Psychology of Education
- Research Project 1 and 2
- Two courses from Business Management (Changing Trends in Employment and The Contemporary Workforce)
- Workplace Psychology

For full details of the optional courses please refer to our website.

ENTRY REQUIREMENTS

Refer to Summary of Entry Requirements at page 66-69.

Accredited by



the british
psychological society
promoting excellence in psychology

STUDY AT HERIOT-WATT

FUTURE MADE

ALL OF OUR PROGRAMMES ARE GROUPED INTO SUBJECT TABLES ON THE FOLLOWING PAGES WITH AN INDICATION OF THE LEVEL OF AWARD.

TO GET MORE DETAILED INFORMATION ON THE STRUCTURE OF OUR PROGRAMMES INCLUDING COURSE CONTENT, ENTRY REQUIREMENTS, MODES OF DELIVERY, FEES AND FUNDING PLEASE GO TO OUR WEBSITE.



www.hw.ac.uk/malaysia

FOUNDATION PROGRAMMES

Our Foundation Programmes are designed to provide you with a pathway into an undergraduate degree in disciplines including Engineering, Actuarial Science, Management, Psychology, Computing Science and Statistical Data Science. They are designed to help you bridge the gap between your school qualifications and the demands of a university degree. Upon successful completion of this programme you will be able to progress directly into your chosen degree programme.

T Taught Programme

www.hw.ac.uk/malaysia

Programme	Intake	Award
T Foundation in Science KPT/JPS (R2/0011/3/0223) (MQA/FA3952) 07/30	January, April, July, September	Certificate
T Foundation in Business KPT/JPS (R/010/3/0240) (MQA/FA4351) 03/24	January, April, July, September	Certificate

UNDERGRADUATE PROGRAMMES

For students wishing to pursue undergraduate studies (MA, BA, BSc, MEng), Heriot-Watt University Malaysia offers an impressive range of full-time programmes. Our portfolio of our undergraduate programmes covers a wide range of career-focused specialisms and most programmes are accredited by relevant professional bodies.

T Taught Programme

www.hw.ac.uk/malaysia

SCHOOL OF ENERGY, GEOSCIENCE, INFRASTRUCTURE AND SOCIETY

Programme	Intake	Award
T Quantity Surveying KPT/JPS (R/0734/6/0001) (MQA/FA4369) 06/24	January, September	BSc (Hons)
T Civil Engineering KPT/JPS (R/526/6/0108) (MQA/FA6195) 08/27	September	MEng

SCHOOL OF ENGINEERING AND PHYSICAL SCIENCES

	Programme	Intake	Award
T	Chemical Engineering KPT/JPS (R/524/6/0041) (MQA/FA5107) 11/26	January, September	MEng
T	Electrical and Electronic Engineering KPT/JPS (R/523/6/0265) (MQA/FA6194) 08/27	September	MEng
T	Mechanical Engineering KPT/JPS (R/521/6/0092) (MQA/FA5108) 11/26	January, September	MEng

SCHOOL OF MATHEMATICAL AND COMPUTER SCIENCES

	Programme	Intake	Award
T	Actuarial Science KPT/JPS (R/462/6/0008) (MQA/FA4167) 06/24	September	BSc (Hons)
T	Statistical Data Science KPT/JPS (R/462/6/0018) (MQA/FA8513) 06/27	September	BSc (Hons)
T	Computing Science KPT/JPS (N/481/6/0833) (MQA/PA14530) 06/26	January, September	BSc (Hons)

EDINBURGH BUSINESS SCHOOL

	Programme	Intake	Award
T	Accounting and Business Finance KPT/JPS (R/344/6/0452) (MQA/FA7011) 03/26	January, September	MA (Hons)*
T	Business and Finance KPT/JPS (R/340/6/0490) (MQA/FA4165) 11/24	September	MA (Hons)*
T	International Business Management KPT/JPS (R/340/6/0657) (MQA/FA7425) 03/26	January, September	MA (Hons)*
T	Bachelor of Business Administration KPT/JPS (R/345/6/0564) (MQA/FA4166) 05/24	January, September	BBA (Hons)
T	Marketing KPT/JPS (N/0415/6/0002)(MQA/PA15449) 05/27	January, September	MA (Hons)*

SCHOOL OF SOCIAL SCIENCES

	Programme	Intake	Award
T	Psychology KPT/JPS (R/311/6/0081) (MQA/FA8056) 04/26	January, September	BSc (Hons)
T	Psychology with Management KPT/JPS (R/311/6/0075) (MQA/FA5343) 08/25	January, September	BSc (Hons)

**The degree of Master of Arts (MA) is an undergraduate Honours degree, awarded by Heriot-Watt and the ancient universities in Scotland and the UK including Aberdeen, Dundee, Edinburgh, Glasgow, St Andrews, Cambridge and Oxford. At other universities in Scotland and the UK, undergraduate degrees in the arts, liberal arts, humanities or social sciences are awarded as Bachelor of Arts (BA).*

SUMMARY OF ENTRY REQUIREMENTS

FOUNDATION PROGRAMME		
PROGRAMME	SPM/IGCSE	SUBJECT REQUIREMENT
Foundation in Science	5C	<p>FOR ENGINEERING PATHWAY 5Cs in SPM/IGCSE or equivalent, in relevant subjects including English, Physics, Chemistry, Mathematics and Additional Mathematics.</p> <p>FOR ACTUARIAL, COMPUTING SCIENCE AND DATA SCIENCE PATHWAY 5Cs in SPM/IGCSE or equivalent, in relevant subjects including English, Physics, Mathematics and Additional Mathematics.</p> <p>FOR ACCOUNTING AND FINANCE PATHWAY 5Cs in SPM/IGCSE or equivalent, in relevant subjects including English, Physics and Mathematics.</p> <p>FOR BUSINESS AND BUILT ENVIRONMENT PATHWAY 5Cs in SPM/IGCSE or equivalent, in relevant subjects including English, Mathematics and Physics.</p> <p>FOR PSYCHOLOGY PATHWAY 5Cs in SPM/IGCSE or equivalent, in relevant subjects including English, Mathematics and Physics.</p>
Foundation in Business	5C	<p>FOR ACCOUNTING AND FINANCE PATHWAY 5Cs in SPM/IGCSE or equivalent, in relevant subjects including English and Mathematics.</p> <p>FOR BUSINESS PATHWAY 5Cs in SPM/IGCSE or equivalent, in relevant subjects including English and a pass in Mathematics</p> <p>FOR BUILT ENVIRONMENT* PATHWAY 5Cs in SPM/IGCSE or equivalent, in relevant subjects including English and Mathematics (<i>*Excluding Civil Engineering</i>)</p> <p>FOR PSYCHOLOGY PATHWAY 5Cs in SPM/IGCSE or equivalent, in relevant subjects including English, Mathematics and Science.</p> <p>FOR ACTUARIAL, COMPUTING SCIENCE AND DATA SCIENCE PATHWAY 5Cs in SPM/IGCSE or equivalent, in relevant subjects including English, Mathematics and Additional Mathematics.</p>

Progression to your chosen undergraduate programme may require pre-requisite subjects with specific grades at the SPM/IGCSE equivalent levels in addition to your Foundation results.

UNDERGRADUATE PROGRAMMES

PROGRAMME NAME	QUALIFICATION								
	STPM/A-Level	IB Diploma	SMA 3	***UEC	WACE/SACE	*CPU	FIS	FIB	Pre-requisite subjects
BSc (Hons) Actuarial Science BSc (Hons) Statistical Data Science	ABB	28 points	8	8 points or less	ATAR 90**	NA	Grade C average	Grade C average	STPM/A-Level: A in Mathematics SMA 3: 8.0 in Mathematics IB Diploma: Minimum 6 in HL Mathematics; AA UEC: A1 in Mathematics and Advanced Mathematics WACE: Minimum 80% in Mathematics Method SACE: Minimum 17.0 in Mathematics Method FIS/FIB: A in Mathematics and C in English.
BSc (Hons) Computing Science	BBB	26 points	8	12 points or less	ATAR 80	80%	Grade C average	Grade C average	STPM/A-level: B in Mathematics IB Diploma: Minimum 5 in HL Mathematics; AA or AI SMA 3: 8.0 in Mathematics UEC: A in Mathematics WACE/SACE: B in Mathematics Method or Specialist Mathematics CPU: Minimum 70% in Mathematics FIS/FIB: B in Mathematics and C in English.
MEng Chemical Engineering	BBC	26 points	8	15 points or less	ATAR 75	75%	Grade C average	NA	STPM/A-level/or equivalent: B in Mathematics and Chemistry IB Diploma: Minimum 5 in SL Chemistry and Mathematics; AA (or 5 in HL Mathematics; AI) SMA 3: 8.0 in Mathematics and Chemistry UEC: A in Mathematics and Chemistry WACE: Minimum 65% in Mathematics Method and Chemistry SACE: Minimum 15.0 in Mathematics Method and Chemistry CPU: Minimum 70% in Mathematics and Chemistry. FIS: C in Mathematics, Chemistry and English.
MEng Civil Engineering	BBC	26 points	8	15 points or less	ATAR 75	75%	Grade C average	NA	STPM/A-level/or equivalent: B in Mathematics and Physics IB Diploma: Minimum 5 in SL Physics and Mathematics; AA (or 5 in HL Mathematics; AI) SMA 3: 8.0 in Mathematics and Physics UEC: A in Mathematics and Physics WACE: Minimum 65% in Mathematics Method and Physics SACE: Minimum 15.0 in Mathematics Method and Physics CPU: Minimum 70% in Mathematics and Physics. FIS: C in Mathematics, Physics and English.
MEng Mechanical Engineering	BBC	26 points	8	15 points or less	ATAR 75	75%	Grade C average	NA	STPM/A-level/or equivalent: B in Mathematics and Physics IB Diploma: Minimum 5 in SL Physics and Mathematics; AA (or 5 in HL Mathematics; AI) SMA 3: 8.0 in Mathematics and Physics UEC: A in Mathematics and Physics WACE: Minimum 65% in Mathematics Method and Physics SACE: Minimum 15.0 in Mathematics Method and Physics CPU: Minimum 70% in Mathematics and Physics. FIS: C in Mathematics, Physics and English.

SUMMARY OF ENTRY REQUIREMENTS (CONTINUED)

UNDERGRADUATE PROGRAMMES

PROGRAMME NAME	QUALIFICATION								Pre-requisite subjects
	STPM/ A-Level	IB Diploma	SMA 3	***UEC	WACE/ SACE	*CPU	FIS	FIB	
MEng Electrical and Electronic Engineering	BBC	26 points	8	15 points or less	ATAR 75	75%	Grade C average	NA	STPM/A-level/or equivalent: B in Mathematics and Physics IB Diploma: Minimum 5 in SL Physics and Mathematics: AA (or 5 in HL Mathematics: AI) SMA 3: 8.0 in Mathematics and Physics UEC: A in Mathematics and Physics WACE: Minimum 65% in Mathematics Method and Physics SACE: Minimum 15.0 in Mathematics Method and Physics CPU: Minimum 70% in Mathematics and Physics FIS: C in Mathematics, Physics and English.
BSc (Hons) Quantity Surveying	BBC	26 points	8	15 points or less	ATAR 75	75%	Grade C average	Grade C average	FIS/FIB: C in English Note: Minimum C in Mathematics at SPM/IGCSE level or equivalent.
BSc (Hons) Psychology BSc (Hons) Psychology with Management	CCC	25 points	7.5	20 points or less	ATAR 70	70%	Grade C average	Grade C average	FIS/FIB: C in English. Note: Minimum C in Science and Mathematics at SPM/IGCSE level or equivalent.
MA (Hons) Accounting and Business Finance	STPM C+C+ A-level DDD	24 points	6.0	30 points or less	ATAR 50	50%	Pass and eligible to receive the award	Pass and eligible to receive the award	IB Diploma: 24 points excluding TOK and EE. Note: Minimum C in Mathematics at SPM/IGCSE level or equivalent. MQA requires Malaysian students to possess a MUET Band 2 or equivalent qualification in order to register for the programme when using an entry qualification whereby the medium of instruction is not in English, e.g. UEC, STPM.
MA (Hons) Business and Finance	STPM CC A-level DDD	24 points	6.0	30 points or less	ATAR 50	50%	Pass and eligible to receive the award	Pass and eligible to receive the award	IB Diploma: 24 points excluding TOK and EE. Note: Minimum Pass in Mathematics at SPM/IGCSE level or equivalent.
Bachelor of Business Administration (Hons) MA (Hons) International Business Management MA (Hons) Marketing	STPM CC A-level DDD	24 points	6.0	30 points or less	ATAR 50	50%	Pass and eligible to receive the award	Pass and eligible to receive the award	IB Diploma: 24 points excluding TOK and EE. Note: Minimum pass in Mathematics at SPM/IGCSE level or equivalent.

*CPU: based on six best relevant subjects including English (average score) **May be subject to school assessment

***UEC: 5 subjects not less than B grade.

Information on this page is a guide only and some programmes may require higher entry requirements for some or all subjects. The University reserves the right to change this without prior notice. If your country's qualification is not listed, or you have any questions, contact our Recruitment and Admissions Office: MYadmissions@hw.ac.uk

ENGLISH LANGUAGE REQUIREMENTS

The following are the English language requirements for entry into our programmes.

ENGLISH REQUIREMENTS				
Qualification	Foundation	UG	UG - Actuarial and Statistical Data Science	PG
IELTS Academic / IELTS Indicator	5.5	6	6.5	6.5
TOEFL iBT / Special Home Edition	72	79	85	85
Pearson PTE Academic	60	65	68	68
Cambridge (New)	162	169	176	176
Cambridge (Old)	FCE Grade C	FCE Grade B	FCE Grade A CAE Grade C	FCE Grade A CAE Grade C
MUET	Band 3	Band 4	Band 5	Band 5
Heriot-Watt English (PSEP Intermediate)*	C	C	C	C
SPM	C	B+	A	A
1119 GCE-O	C	B	A	A
GCSE/IGCSE	C	B	A	A
UEC	B4	B3	A2	A2

* May not be appropriate for visa application purposes by EMGS. Please speak to our Education Consultant for more information.

Please speak to our Education Consultant for other English proficiency equivalencies and entry.

In order to study effectively at Heriot-Watt, you need excellent English language skills. For those who need assistance, and do not meet the English entry requirements above, Heriot-Watt University Malaysia provides a Pre-Sessional English Programme (PSEP).

Pre-Sessional English Programme English Requirements		
Qualifications	Minimum requirements	
	Intermediate	Lower Intermediate
IELTS	5.0	4.5
Cambridge	155-161	147-154
Pearson PTE Academic	36-50	29-35
TOEFL	44-56	32-43

This course is designed for students who need to raise their level of English to effectively participate in an academic setting. There are programmes which may require you to take an external English test (MUET/IELTS/PTE/TOEFL/etc.) as specified by the programme standard set by the Malaysia Quality Agency. Please speak to our Education Consultant for more information.

Course structure: 10 weeks/20 hours a week. Assessment will be 60% exam and 40% coursework.

Depending on your level of English, you will enter into one or both levels:

- **Lower Intermediate level:** January and April (For entry into April or July Foundation intakes) (N/KJP/00177)
- **Intermediate level:** June and October (For entry into September or January degree intakes) (N/KJP/00178)

For more information on our English programmes, please contact:

Recruitment and Admissions Office
Heriot-Watt University
Malaysia
No 1, Jalan Venna P5/2,
Precint 5,
62200 Putrajaya
Malaysia

www.hw.ac.uk/malaysia
E: hwum@hw.ac.uk
T: +60 3 8894 3888
F: +60 3 8894 3999

SCHOLARSHIPS AND TUITION FEES



At Heriot-Watt, we believe that a university education is an investment in your future. In order to help with your finances, we offer a range of scholarships to qualifying students.

TUITION FEES

For full details of current tuition fees for local and international students, please visit: www.hw.ac.uk/malaysia/study/fees/tuition.htm

SCHOLARSHIPS

Our range of scholarships to qualifying students includes those offered by Heriot-Watt and industry partners. For full details of all the scholarships and assistance offered, visit: www.hw.ac.uk/malaysia/study/fees/scholarships.htm

LEADERS WITH IMPACT SCHOLARSHIP

This scholarship supports our university's vision in enabling Malaysian youth from B40 families with access to a Heriot-Watt University education, provide educational financial support, build career and life skills, regardless of their background or circumstances in life.

These scholarships are for 10 students for the next 10 years who have completed SPM/STPM/UEC or equivalent examination. Successful candidates will be awarded with 100% tuition fee, and a cost-of-living allowance of up to RM1,300 per month for the entire duration of study.

MERIT SCHOLARSHIPS

The University offers a number of merit scholarships of up to RM12,000 of tuition fees to recognise high achieving students.

How does it work?

- Up to three employees from the same organisation enrolling for any postgraduate programme within the same intake will be entitled to a 25% reduction in fees for all.
- Four employees and above from the same organisation enrolling for any postgraduate programme within the same intake will each receive a 30% reduction in fees.

FAMILY DISCOUNT

A discount of 10% is granted to immediate family members (including parents, spouse, and siblings) of a Heriot-Watt University alumni and currently registered students of Heriot-Watt University Malaysia. This discount is awarded on receipt of documentary evidence proving the relationship of the registered applicant and the alumnus or student.

PTPTN FUNDING

You can apply for PTPTN loans to supplement tuition fees at our campus provided that you are a Malaysian citizen pursuing full time undergraduate studies here.

APPLICATION ADVICE

We also support and advise students in the application of loans and grants. The Scholarship and Financial Aid Unit assists in providing certification for documents required for the application for EPF withdrawals, bank loans and more. myScholarship@hw.ac.uk

SPONSORSHIPS

Heriot-Watt University Malaysia forges many partnerships with industry to ensure that our programmes stay relevant to industry needs and to open doors for our students to work with them.

The corporate organisations that we maintain close ties with, provide generous scholarships for those who wish to pursue their studies at our University, with numerous benefits as well as providing partial or full scholarships. This can be in the form of job security, internships, or even additional living allowances.

Below is a list of the corporate organisations that provide scholarships for our programmes.

Applications for these scholarships may be directed through our Education Consultants via the Student Recruitment and Admissions unit, or you may need to apply directly to the organisations. You should read and understand the terms and conditions for each of the scholarships at the respective organisation's website below before applying for them.

For more details, visit:

www.hw.edu.my/scholarships



Gamuda
Gamuda Scholarship



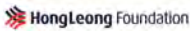
Suruhanjaya Sekuriti
Securities Commission
Scholarship Award



TSH Resources Berhad
TSH Group Scholarship



Genting Malaysia
Genting Malaysia
Scholarship Award
(GENM Scholarship)



HongLeong Foundation
Hong Leong Foundation
Scholarship



YTL Foundation
YTL Foundation
Scholarships



FWD Takaful
Leaders with Impact
Scholarship



Experian
Leaders with Impact
Scholarship



Jabatan Perkhidmatan Awam



Yayasan UEM
Yayasan UEM
Scholarship Programme



Yayasan Tunku Abdul Rahman
Leaders with Impact
Scholarship



Petronas
Petronas Education
Sponsorship Programme



Maxis
Maxis What's Next
Scholarship



Sarawak Energy Berhad
Sarawak Energy
Scholarship



OCBC Bank
OCBC Public
Scholarship

GLOBAL NETWORK

THE WATT CLUB

Founded in 1854, The Watt Club is understood to be the oldest alumni association in the UK. Lifetime membership is automatic upon graduation from Heriot-Watt, and is free to all graduates of the University.

AN INTERNATIONAL ASSOCIATION

With several branches around the world, The Watt Club can help you keep in touch with Heriot-Watt alumni wherever your career takes you. We run a regular bulletin online which allows you to keep up with alumni worldwide and send our yearly magazine to graduates around the world.

A DISTINGUISHED HISTORY

We are proud of our distinguished history, which stretches back nearly 200 years. Our Watt Club Medal and Prize continue a tradition of awarding Heriot-Watt's most able students which has been part of the Club since its inception, and The Watt Club Council acts to ensure the voices of alumni continue to be heard for years to come.

EXCELLENT GRADUATE OPPORTUNITIES

We work to provide our alumni with opportunities throughout their lives through several initiatives including: a number of continuing professional development courses and networking opportunities through our social media channels.



I love the international diversity of the University. I get to meet people from all walks of life as the University has a great mobility programme, allowing students from other countries to come here, and vice versa. This gives me great exposure on the global context in terms of culture and diversity.

PENNY LOW

BSC (HONS) PSYCHOLOGY
WITH MANAGEMENT

HOW TO APPLY

Heriot-Watt University Malaysia accepts applications all year round. Please follow one of the application routes below.

APPLY ONLINE

You can apply online for our programmes at bit.ly/hwumapply. You must create an account to use the online application form. You don't have to complete the application in one session; you can save the information you have already entered and return to complete it at a later date. There is a help facility on each page of the online form.

SUPPORTING DOCUMENTS

Please remember to upload supporting documents so that we can make a decision on your application. This includes proof of English language proficiency and original or certified copies of academic transcripts. Please refer to the supplemental item checklist on the Online Application form:

<http://bit.ly/hwumaccount>

See website for details of fees:

www.hw.ac.uk/malaysia/study/fees/tuition.htm

RESPONSE TO YOUR APPLICATION

All applications will be carefully considered by our admissions team and one of the following three responses will be given:

Unconditional Offer: meaning that you have been accepted to the academic programme. Please respond to the offer within two weeks of receipt.

Conditional Offer: meaning that you will be required to submit additional supporting documents prior to acceptance to the programme.

Rejection: we will inform you that your application has been unsuccessful this time. This does not prevent you from applying again to another programme meeting the programme minimum entry requirement.

We will reply to you by email. Please ensure that you provide us with the correct email address.



BANK DETAILS

Payable to

Heriot-Watt University
Malaysia
SDN BHD

Account Number

5140-1102-2817

Bank name

Malayan Banking Berhad
(Maybank)

Bank address

Floor 8, Menara Maybank,
100 Jalan Tun Perak,
50050 Kuala Lumpur,
Malaysia

Swift code

MBBEMYKL

Email to:

MYadmissions@hw.ac.uk

Payment reference

Name of student

STUDENT CLUBS

Discover the Vibrant Community at Heriot-Watt University Malaysia

Embarking on your academic journey at Heriot-Watt University Malaysia (HWUM) means more than just gaining an education – it means becoming a part of a dynamic and inclusive community that values both your academic and personal growth. Our student experience is crafted to prepare you for the professional world while nurturing a sense of belonging that lasts a lifetime.

Community Beyond Borders: HWUMSA

At the heart of our vibrant community is the Heriot-Watt University Malaysia Student Association (HWUMSA).

We, the members of HWUMSA, are dedicated to enriching your university experience. Our mission is to foster a spirit of learning and collaboration among students, ensuring that every individual, regardless of background or interest, can blossom into their best selves.

Diverse Clubs and Societies

Our campus is home to over 40 diverse and inclusive clubs and societies. These student-led groups span various areas of interest, including arts and culture, community service, professional development, engineering & sustainability, and sports.

These clubs aren't just extracurricular activities; they are avenues for personal growth, where you can explore your passions, enhance your skills, and build lifelong friendships.

Your Journey of Personal Growth

Being a part of HWUM goes beyond academics. It's about overcoming challenges, gaining unique experiences, forming connections, and discovering your true potential. As a student-led community, we believe in empowering

each other to face the world with confidence and resilience. The journey might be challenging, but it's on this roller coaster of experiences that you'll find your inner strength and emerge stronger.

A FutureMade Community

Choosing HWUM is choosing a future made not only of knowledge but of supportive friendships, transformative experiences, and a strong sense of community. Together, we help each other grow, learn, and become the best versions of ourselves. Your decision to join us is a step towards a fulfilling university experience that shapes your future in remarkable ways.

Join Us!

We eagerly await your enrolment to our community that is driven by purpose. By becoming a part of HWUM, you are deciding to be FutureMade – a decision that promises an enriching education and a supportive network that will guide you towards becoming the best version of yourself. Embrace the journey, seize the opportunities, and let's shape the future together at Heriot-Watt University Malaysia.



RYAN KOH ZHI YUNG

President, Heriot-Watt University

Malaysia Student Association

Email: MYstudent.president@hw.ac.uk

Website: www.hwumsa.com

AND SOCIETIES

Arts and Culture

Bullet Journaling
Music Club



Community Service

Ariston Club
AIESEC
Philanthropy Club
Engineers Without Borders Club



Engineering and Sustainability

Energy Institute
IChemE
IMechE
Institute of Civil Engineers
Institute of Engineers Malaysia (IEM)
Society of Petroleum Engineers
Society of Quantity Surveying and Construction (SQSC)
Institution of Engineering and Technology (IET)

Professional Development

Accounting and Finance Club
Computer and Programming Unplugged (CPU)
Foundation Club
Future Challengers Experts (FCeX)
MakerZ
Psychology Society
Society of Actuarial Science
Society of Logical Interpretation of Data (SOLID)
Technopreneur Club
Toastmasters Club
Women in Science and Engineering (WISE)

Sports Clubs

Badminton Club
Basketball Club
Captain Ball Club
Chess and Boardgames Club
Cricket Club
Dodgeball Club
Football Club
Futsal Club
Handball Club
Netball Club
Rugby Club
Table Tennis Club
Taekwondo Club
Volleyball Club



For a more current and updated list, please visit www.hwumsa.com

SUPPORTING YOU



The Student Life Team provides support and advice for students throughout their studies.

STUDENT SERVICE CENTRE

Staff provide guidance on a range of administrative matters to ensure that students receive the right information. Main responsibilities include enrolment, scholarships and financial aids, study loans, administrative services, student records, examinations, amendments to registration, fee collections, timetables, room bookings, appeals, graduations and clarification on policies and procedures including campus transfers.

Information is available on the University's website and if you require further guidance on any student-related issues, please contact the Student Service Centre.

student-services-malaysia@hw.ac.uk

For scholarships, financial aids, and study loan related matters, please contact Scholarship and Financial Aids.

myScholarship@hw.ac.uk

INTERNATIONAL STUDENTS

It can be daunting for international students who are leaving home for a new country. Our Global Student Office (GSO) is set up to assist international students accepted to study at Heriot-Watt University Malaysia, from student visa application to arrival at the University.

The GSO lodges your student visa applications with Education Malaysia Global Services (EMGS) and helps you with all the questions you may have before your arrival.

A representative from the GSO will also meet you and check you into student accommodation.

A range of support departments are available to assist you throughout your studies. During Welcome Week, new students will be introduced to each department and the services it provides.

MYinternationaloffice@hw.ac.uk

COUNSELLING

Being a student can be a very positive experience but it can also bring a variety of challenges. We know that the pressures of studying and being in a new environment can impact on your relationships, finances and general wellbeing, and that this can sometimes feel overwhelming.

We can offer you counselling, support and information to help you deal with the difficulties you may face.

counsellinganddisability@hw.ac.uk

INFORMATION SERVICES

Information Services staff based at the Tan Sri (Dr) Yeoh Tiong Lay Library provide support to students on Information Services, which encompasses Library, Information and Learning Technology services. New students will receive an induction to Information Services when they start at the University.

IT

Students are supported in their learning with IT facilities including industry relevant software and the Virtual Learning Environment (VLE). The VLE is a web-based integrated learning and teaching tool.

ISHelp@hw.ac.uk

LIBRARY

The library has been designed to cater for the different learning styles and preferences of students. Silent study rooms have been provided for individual study while group study and discussion areas are provided for collaborative learning. In addition, we have dedicated study spaces that are open 24 hours, 7 days a week.

The selection of books and journals available in the library are updated throughout the academic year in response to requests from students and academic staff. All Heriot-Watt students, globally, receive access to nearly 50,000 electronic journals, more than 270 databases, and 71,000 e-books.

During the academic year, Skills Hub workshops designed to enhance information literacy, study, research and IT skills are offered.

ishelp@hw.ac.uk

RECRUITMENT AND ADMISSIONS

The Recruitment and Admissions Office will advise and support prospective applicants, their parents and advisors at every stage of the applications process.

We will provide you with all the information you need to ensure that you are able to make the right choice and help you with any questions or concerns that you may have.

hwum@hw.ac.uk

PERSONAL TUTOR

Every student has a member of academic staff allocated to them as a personal tutor who will be a key source of advice, guidance and support during your time at Heriot-Watt University Malaysia. Your personal tutor is your first point of contact if you need advice on any issue, both academic and non-academic, and can refer you to other support services where relevant for non-academic matters. Personal tutors provide a clear point of contact for you throughout your degree.

studentsuccessMY@hw.ac.uk

CAREERS AND GRADUATE FUTURES

The Careers and Graduate Futures aims to help students identify their career goals and develop the skills required to gain employment. We provide careers information on a range of topics including applications, CVs, interview techniques, aptitude tests, internships and graduate occupations.

We assist students by providing opportunities for their internships, which are compulsory for certain programmes. Careers events will be organised during the academic year to introduce students to employers and provide networking and employment opportunities.

MYCareers@hw.ac.uk

Heriot-Watt students also have access to our careers website, which is managed by our UK campus and supported by local staff.

ACCOMMODATION

We want our students to be taken care of and student life to be as enjoyable as possible throughout your higher education journey.

We coordinate, liaise and arrange our off-campus student accommodation with approved external service providers to ensure you have safe and suitable living arrangements and the best experience. Our accommodation choices are located in both Cyberjaya and Putrajaya, about 10-15 minutes drive from the campus.

A complimentary shuttle bus operates between the student residences and the campus and there is also easy access to public transportation.

Both have 24 hour security and each has a warden who is there to help you settle in and sort out any problems along the way.

For accommodation details and to apply please refer to the website:

www.hw.ac.uk/malaysia/campus/accommodation.htm

or email:

MYaccommodation@hw.ac.uk

STUDENT DEVELOPMENT

We offer a range of activities to help students settle into university life, make friends and feel part of a university community. We provide opportunities for students to develop important skills and gain valuable experience, in addition to those offered by our academic programmes. It all helps Heriot-Watt University in shaping the leaders of the future.

SPORT AND RECREATION

There are many sights to see and leisure opportunities in and around Kuala Lumpur and Putrajaya, where the many public parks provide excellent recreation and picnic spots for students.

In Putrajaya, a range of sports and recreation facilities are easily accessible and offer special rates or discounts to Heriot-Watt students.

SUPPORTING YOU

The sports complex in Precinct 18 has outdoor and indoor facilities, with many free of charge on weekdays. The water-sports complex at Precinct 6 boasts an Olympic-size swimming pool and other facilities. There is also an Extreme Challenge Park at Precinct 5 and Equestrian Club.

Note: These facilities are subject to availability of the said sports complexes.

EXTERNAL BUS ROUTE

Heriot-Watt University Malaysia is committed to providing transportation to and from the campus for our students. The University offers a bus service to connect our students to and from these strategic locations - MRT Bandar Utama, LRT Kelana Jaya and LRT Pusat Bandar Puchong stations.

There are a number of clubs and societies which are actively seeking new student members. Clubs are run by students for students and are an excellent way to get involved and enrich your university life.

For more information about the latest student activities, clubs and associations, visit:

www.hwumsa.com

STUDENT CLUBS AND SOCIETIES

We encourage students to get involved in student activities. Student clubs and societies are a great way to meet new people and make friends with students from around the world.





FREQUENTLY ASKED QUESTIONS

Q **When can I apply to Heriot-Watt University Malaysia?**

A You can apply to the Malaysia Campus any time you like, as we have a rolling admissions system. There are deadlines before the start of each semester, however. Please contact us for more information.

Q **When will I receive my offer of study?**

A The Recruitment and Admissions Office will endeavour to contact you within 2 working days of receiving a completed application.

Q **Do I need proof of English language proficiency to apply?**

A If English is not your first language and you have not studied in English before (either at school or at a previous institution) then you must provide proof of English language proficiency. Each programme has its own requirements.

Q **Do you have multiple intakes?**

A Yes. September is our largest intake with all programmes that we offer starting then. We have a January intake for a limited number of undergraduate programmes. Our Foundation intake is in January, April, July and September.

Q **Is there a careers service?**

A Yes. We have a Careers and Graduate Futures unit that supports all students.

Q **Do you allow students to transfer from other universities and colleges?**

A Yes. Provided that you have studied and passed the necessary subjects for our programmes, we will consider your application to transfer. Transcripts or mark sheets detailing previous education must be submitted at the time of applying. Kindly email us at HWUM@hw.ac.uk for assessment.



Q Do I have to take an entrance test?

A No. Your application is assessed by your previously attained qualifications or the successful completion of the qualifications that you may be currently pursuing.

Q Do the programme fees include the programme materials and exam fees?

A The annual fees include all academic costs associated with completing your programme. Resit, transport, accommodation and visa fees/charges are additional, as is the application processing fee.

Q Is there a personal tutoring scheme?

A Yes. Each student is assigned to a member of the academic staff with whom they meet throughout the year.

Q Am I allowed to transfer to UK and Dubai?

A Yes, you can transfer to the UK and/or Dubai under our Go Global programme, with minimum 1 semester or to complete the remaining study.

Q Do you offer scholarships for students who achieve good results throughout their study?

A Yes, we offer progression scholarship for students who maintain an average of 70% and above.

Q Do you offer instalment payment?

A Yes, we do. Please speak to our Education Consultants to find out more.

Q Will my degree certificate mention Malaysia?

A No. As students study British programmes regardless of the country or campus in which they are based, all are awarded the same Heriot-Watt University certificate.

Q Do you offer internships?

A The university does not offer a formal placement programme as part of your degree. However, the Malaysia Campus has excellent links with local and international companies and assists students in finding suitable internships. Please visit **hw.jobteaser.com** for more information.

Q Are the programmes accredited?

A All programmes at the Malaysia Campus are accredited by the Malaysian Ministry of Education and Malaysian Qualifications Agency. Most are fully accredited, while some have partial accreditation until the first batch of students graduate. All graduates receive a British degree that is accredited by Royal Charter in the UK.

For programme enquiries, or accommodation, transport or visa queries, please contact:

Recruitment and Admissions Office
Heriot-Watt University Malaysia
No 1, Jalan Venna P5/2,
Precint 5,
62200 Putrajaya
Malaysia

www.hw.ac.uk/malaysia
E: hwum@hw.ac.uk
T: +60 3 8894 3888
F: +60 3 8894 3999

OUR IMPACT

Our communities of scholars come from across the world and for a purpose: to transform people and the world. As leaders in ideas and solutions, they deliver innovation and educational excellence in business, engineering, design and the physical, social and life sciences.

OUR PIONEERING RESEARCH IS...

DRIVING GLOBAL SUSTAINABILITY
ADVANCING ARTIFICIAL INTELLIGENCE
INNOVATING GLOBAL DESIGN PRACTICE
REVOLUTIONISING CELL BIOLOGY
TACKLING GLOBAL ISSUES IN HOUSING AND POVERTY
DESIGNING NEW SOLUTIONS IN CONDUCTIVE TEXTILES
EXPLORING HUMAN IMPACT ON THE DEEP SEA
BRIDGING GLOBAL LANGUAGE BOUNDARIES
GENERATING A SAFER ENVIRONMENT
PROTECTING HUMAN HEALTH
LEADING QUANTUM TECHNOLOGIES
CHALLENGING GLOBAL OIL INDUSTRY ISSUES
PIONEERING DECARBONISATION AND CARBON STORAGE
SECURING GLOBAL COMMUNICATION

AWARDED QUEEN'S
ANNIVERSARY PRIZE FOR
PIONEERING RESEARCH IN THE
FRONTIER OF PHOTONICS.



THE QUEEN'S
ANNIVERSARY PRIZES
FOR HIGHER AND FURTHER EDUCATION
2021



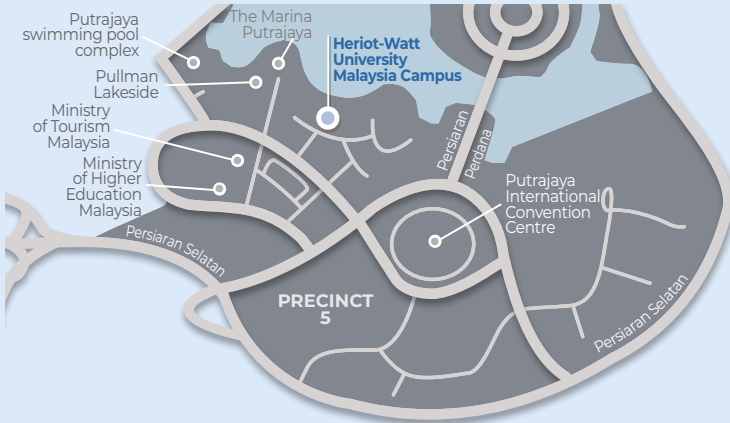
Our strong performance in the REF21 shows that our research, and our shared research, continues to go from strength-to-strength, focusing on major global challenges, interdisciplinarity and collaboration. Physics has done outstandingly well, and is an area of well-established excellence, further recognised in the 2021 Queen’s Anniversary Prize for photonics.

Professor Steve McLaughlin
Deputy Principal of Research and Impact



www.hw.ac.uk/research

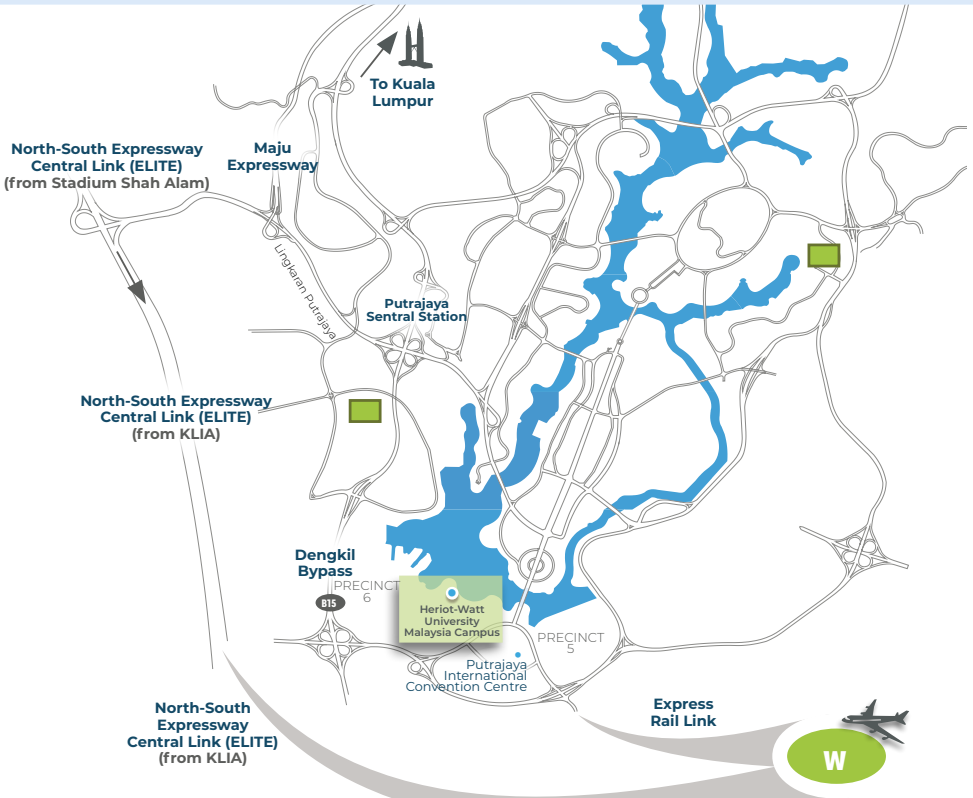
ROUTE MAP TO HERIOT-WATT UNIVERSITY MALAYSIA



- ROAD
- LANDMARK
- ACCOMMODATION
- KUALA LUMPUR INTERNATIONAL AIRPORT**

No 1, Jalan Venna P5/2
Precinct 5,
62200 Putrajaya,
Malaysia
www.hw.edu.my

Latitude: 2.899305
Longitude: 101.6727019



Edinburgh Campus

Edinburgh EH14 4AS

T: +44 (0) 131 449 5111

F: +44 (0) 131 449 5153

Dubai Campus

Dubai Knowledge Park

PO Box 38103

Dubai

United Arab Emirates

T: +971 4 571 7000

Malaysia Campus

No 1 Jalan Venna P5/2

Precinct 5

62200 Putrajaya

Malaysia

T: +60 3 8894 3888

F: +60 3 8894 3999

Scottish Borders Campus

Galashiels TD1 3HF

T: +44 (0) 1896 753351

F: +44 (0) 1896 758965

Orkney Campus

Franklin Road

Stromness

Orkney

KW16 3AN

T: +44 (0) 1856 850605

www.hw.ac.uk

DISCLAIMER OF LIABILITY

Heriot-Watt University will make all reasonable efforts to deliver the programmes described in this prospectus.

Prospective students should be aware that it is occasionally necessary to modify, discontinue or combine programmes and/or make changes to entry requirements. This may be necessary for a number of reasons such as low enrolments, illness or departure of staff, industrial action or reduction of funding. The University does not provide education on a commercial basis, and is dependent on public and charitable funds which require the University to deploy its resources efficiently and rationally. Changes will only be made if the University reasonably considers it to be necessary.

If a programme is discontinued, the University will use reasonable endeavours to provide a suitable alternative and will take all reasonable steps to minimise disruption; allow a student to withdraw without penalty if a programme is cancelled or significantly varied, with an appropriate refund of tuition fees and deposits.

Heriot-Watt University is a registered Trademark. The logo is a trademark of the University. Neither can be used unless prior written permission has been obtained. All information correct at the time of going to print.

Heriot-Watt University Malaysia Registration Number:
DULN007(WP).

Heriot-Watt University is a Charity registered in Scotland, SC000278. © Heriot-Watt University, December 2023. All rights reserved.

Editor: Marketing and Communications, Heriot-Watt University.

Design: Heriot-Watt Design.

Photography: Paul Dodds, Laurence Winram, Douglas McBride, Fraser Dear, Tom Finnie, Mark Symes, The Edinburgh Blog, www.ourscottishborders.com, Simon Quinn, Fiona Nimmo, Anthony Stone, Matt Davies, Colin Hattersley, Matt Beech, David Anderson, Studio 20Twelve.

BE FUTURE MADE



hwumalaysia



@hwumalaysia



HeriotWattUniversityMalaysia



heriotwattmalaysia



heriot-watt-university-Malaysia

www.hw.ac.uk

hwum@hw.ac.uk



MALAYSIA UNDERGRADUATE PROSPECTUS 2024



UK | DUBAI | MALAYSIA